

Table of Contents

Leather Terminology.....	3
Hide Definitions.....	4
Leather.....	5
Skirting	6
Tooling Sides, Shoulders.....	7
Latigo, Harness.....	8
Chap Sides.....	9
Chap Split.....	10
Garment Split.....	11
Plonge.....	12
Pig Suede	13-14
Patent Pig.....	14
Lambskin.....	15-16
Deer, Elk	16
Linings, Sole Bends.....	17
Rawhide	18
Drum Frames, Drums.....	18
Miscellaneous.....	19
Upholstery	20
Laces, Lacing	21-22
Sinew, Thread.....	22
Straps, Strings.....	23
Needles.....	24-25
Awls, Hafts, Lacing Tools	26
Punches	27
Hammers, Strap End Punches	28
Grommetts, Hand Tools	29
Edgers, Hand Tools	30-31
Knives, Scissors.....	32

Lamb, Deer & Elk

PRINTED LAMB Faux finish that looks like the real thing.
Great for handbags & cases. 9ft hide average



Croco Black



Croco Brown



Snake Beige



Snake Grey

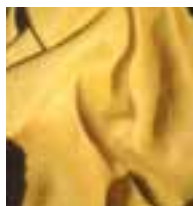
ELK & DEER

These hides are buttery soft, yet rugged enough to last through rough use. The grain adds character to vests, jackets & moccasins. Commercial brain-tanned is available in both elk & deer in white or white-smoked.

ELK COLORS



Tobacco



Gold



Acorn



Willow



Chocolate



Black

DEER COLORS



Tobacco



Gold



Acorn



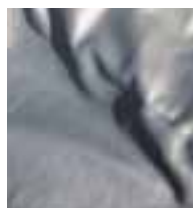
Willow



Chocolate



Red



Black



Turquoise



Blue



Purple



White Braintan



Smoked Braintan

Elkskin 3 - 4 oz Whole hides 18-25 sqft.

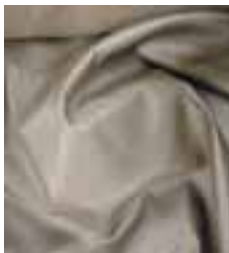
Deerskin 2-3 oz Whole hides 8 - 12 sqft

Deer & Elk are game animals, hides subject to scratches & holes, various grades available.

Cowhides, Linings & Sole Leather

BIKER

Multi usage cow side leather. Soft with a nice touch, slight pebble grain.
Used for belts, boots, shoes, garments, vests. 3 oz., 22 sqft side average.
Black, brown & white.



DORAL

Multi usage cow side. similar to biker but slightly lighter, more color availability.
2-2.5 oz., 22 sqft.

ORTHOPEDIC COW

Nude finish, soft & supple, available in 2-2 1/2 oz. & 3-3 1/2 oz. Cream or Pearl color.



PIG

Inexpensive liner
1.5 – 2 oz.
8 foot average.
Black or Natural.



COW LINING

2-2 1/2 oz.
Yellow
Corrected
Grain.

SOLE BENDS

Clear sole bends available in 9-10 & 11-12 oz. Sold by the pound, 12 lb. average.
We carry a complete line of half soles, fullsoles, heels and shoe findings.



Rawhide

RAWHIDE

UNTANNED, CURED SKINS, STIFF, MOLDABLE AFTER TEMPERING IN WATER AND ALLOWED TO DRY.

AVAILABLE IN THE FOLLOWING VARIETIES:

COWHIDE

7/8 oz. sides. Natural or bleached color.
Ideal for drum heads, saddlery & braiding.
Average 18-22 sqft, 36" depth/width.
Also available in cut lace 1/8, 1/4 & 1/2".
See under Lace.

ELK

Natural whole hides 3/4 oz. 20-24 sqft
average (6 x 4'). Ideal for drums, lamp covers.
#1 & 2 grades.

DEER

Natural whole hides 2/3 oz. 8-9 sqft average.
(2 x 4') Used for hand drums, rattles, lamp shades.

GOAT

Natural or bleached hides 2/3 oz. 6-7 sqft average.
Used for calligraphy, lamp shades, drums.

DRUM FRAMES - Solid Wood Frames:

10 X 1 5/8	18 X 2 1/2
13 X 2 1/2	
15 X 2 1/2	20 X 2 1/2



CHEYENNE HAND DRUM

Built on a 15" hardwood frame.



Miscellaneous

BUFFALO ROBES

#1 Quality thick winter hides add a rustic look to homes, restaurants & hotel lobbies.



HAIR ON COWHIDE RUGS

Available in Medium (30–39 sqft), Large (40–49 sqft), #1 Premium (50+).



Black/White



Black/White
Salt Pepper



Brown/White



Brown/White
Salt Pepper



Brown Brindle



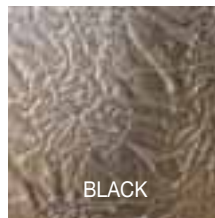
Tri Color

HAIR ON CALF-SKIN

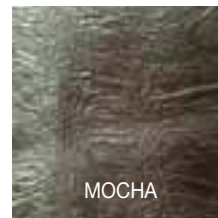
7–8 sqft average. Short hair, great for purses, wallets, pillows. Black/White, Brown/White & Solid Black.

SHRUNKEN SHOULDERS

5.5 oz. Deep Grain. Available Colors: Black, Mocha & Cognac.



BLACK



MOCHA

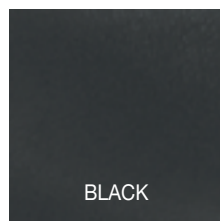


COGNAC

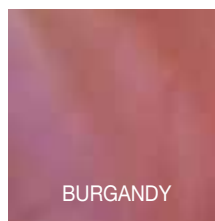
NAPPA KANGAROO

Beautifully tanned in Italy.

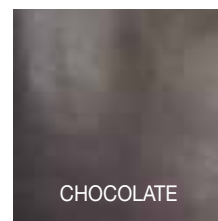
1.5 - 2 oz. hides. Soft hand, great for boots, shoes, handbags, smooth & supple.



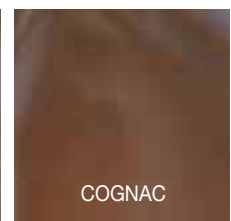
BLACK



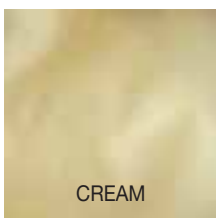
BURGANDY



CHOCOLATE



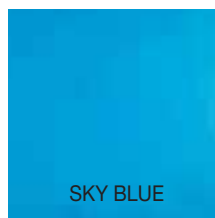
COGNAC



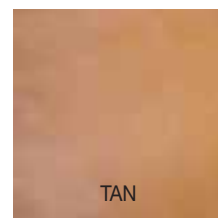
CREAM



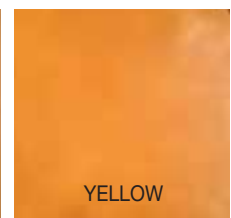
LILAC



SKY BLUE



TAN



YELLOW

Upholstery Hides

CAPRI - Ageless quality with a buttery feel. The rustic look is achieved on full grain, aniline drum-dyed leather.



MAXIMA— This rugged pebble leather has a light waxy feel with exceptional softness. Semi aniline dyed hides, economically priced.



In addition to our Premium upholstery lines we have oddlot or tannery overrun hides at very low prices. Call for availability. We also have scraps of all kinds, upholstery, deer, tooling, latigo.
CALL TODAY!

Leather Lace

LATIGO LACE

Is strong and durable. Use for heavy draw strings, necklaces, bags & footwear. Comes in four colors: Black, Toffee, Dark Brown, Medium Brown & Chieftan. 1/8" x 50' spools.



KANGAROO LACE

Very strong and tight grain, great for braiding. Available in Earth Tones: Black, Brown, Chocolate, Whiskey & Natural. 1/8" x 54 yd spool.

SUEDE LACE

Add decorative leather lace to any project. Soft and pliable sueded surface. Colors: Black, Medium Brown, Chocolate, Toast, Beige, Red, Pink, Purple, Cobalt Blue, Turquoise & White. 1/8 x 25' or 5/32 x 25' spools.



DEER LACE

Lightweight lace has some stretch, but is extremely strong. Can be tapered to a very fine point to be used with tiny beads. 1/8 x 50' or 3/16 x 50' spools. 7 Great Colors.

RAWHIDE LACE

Continuous length rawhide lace. Ideal for braiding, drum lace. Rawhide will soften and become flexible and stretch when dampened, then dry hard to hold shape. Available in 1/8, 1/4, & 1/2 x 50' Hanks.



Leather Lace, Sinew & Thread

CALF LACE

Our Superior Lace is made of the finest pebble calf. Use on craft projects of all kinds and braiding. You will appreciate its fine quality and durability. Widths: 3/32, 1/8, 5/32, 3/16 & 1/4" Colors: Natural, Tan, Light Brown, Medium Brown, Dark Brown, Black & White. 25 yard spools.



Helpful Hint:

Determining the Amount of Lace Needed



Running Stitch

3 to 3-1/2 times the distance to be laced



Whipstitch

6 to 6-1/2 times the distance to be laced



Double Loop

8 to 8-1/2 times the distance to be laced

ARTIFICIAL SINEW

Heavy waxed polyester fibers are spun into a remarkably strong and realistic imitation of natural sinew. Use for weaving Dream Catchers, and stitching. 8 oz spool or 20 yard bobbin.



METALLIC LACE

This Pebble Grained lace is dazzling & tough. Available Colors: #M53225 – (-01) Gold, (-02) Silver, (-03) Bronze, (-04) Copper Size: 5/32" x 25 yards.

NYLTEX THREAD

Prewaxed synthetic thread used for sewing miscellaneous repairs and hand stitching. Available in 25 yd. skeins, 4 & 8 oz. spools. Black, Brown & White.



#200 Speedy Stitcher Kit

Sews a lock-stitch just like a machine. A great tool for sewing or repairing outdoor & camping equipment, saddles & tack. Includes a straight needle, curved needle and 30 yd. skein of waxed polyester thread. Extra thread available in 30 yd. skeins, 180 yd. rolls, fine or coarse.



MACHINE THREAD

Polyester or Nylon 138, 207, 277, 346 & 415 Black, Brown or White. 1 lb. spools.



Z69 D/E

1 oz & 4 oz spools. Black, Brown, White, Tan, Beige. Some high colors available.

Z46 C 4 oz spools.

Call for Color Availability.

Leather Lace, Straps



WAXED LOGGER LACE

This alum tanned oiled and waxed lace is strong and durable, our best boot lace. Available in 54", 72", 96" & 108" lengths.



BASEBALL GLOVE LACE

Same lace used in major name brand gloves. Available in black or tan, 1/8", 3/16" & 1/4" x 72" lengths.

SADDLE STRINGS

Cut from burgundy latigo, available in 3/8" & 1/2" x 72" lengths.



LATIGO BELT BLANKS

These 50" straps are cut from burgundy latigo. Widths: 1/2", 5/8", 3/4", 1", 1 1/4", 1 1/2", 1 3/4" & 2".



STIRRUP LEATHERS

Pre-cut saddle skirting for stirrups or extra heavy duty straps, with or without holes. No finish, 2 1/2" & 3".



MARBLE SLABS

Provides the perfect foundation for tooling leather, or under-neath a poly board when stamping or using leather punches. Average size 10" x 10".



POLY CUTTING BOARD

Protect the investment in your tools by having a high quality surface underneath your leather.

3464-00 12" x 12".

Needles



HARNESS NEEDLE

Osborne No. 517
Blunt point, egg eye.

Size No	000	00	0	1	2	3	4	5	6	7
Inches	2 3/8	2 1/4	2 1/4	2 1/8	2 1/8	2 1/8	1 7/8	1 5/8	1 5/8	1 5/8
Gauge	15	17	18	18	18	19	19	20	21	22
UPC No.	15672	15674	15676	15678	15680	15682	15684	15686	15688	15690



GLOVERS NEEDLE

Osborne No. 518
Triangle sharp point.

Size No	000	00	0	1	2	3	4	5	6	7
Inches	2	2	1 7/8	1 7/8	1 3/4	1 5/8	1 5/8	1 1/2	1 1/2	1 3/8
Gauge	16	17	17	18	19	19	19	20	20	22
UPC No.	15712	15714	15716	15718	15720	15722	15724	15726	15728	15730



TWO PRONG LACE NEEDLE

#1190 10 per pack.
#1190-10 100 Per pack.



LOK EYE (HOOK N EYE) NEEDLE

#1194-00 10 Per Pkg.
#1194-10 100 Per Pkg.



THREADED END BRASS LACE NEEDLE

#1193-01 2 1/4" long.
Use for 3/32 or 1/8" lace.
#1193-02 2 1/4" long.
Use for 1/8, 5/32 or 1/4" lace.
#1193-05 5" long.
3/16 or 1/4", must taper lace.

MONTANA LEATHER CARRIES MACHINE NEEDLES ALSO: ADLER, SINGER, LANDIS, CLAES, FERDINAND

Needles



Each kit contains: 2 ea. Curved upholstery needles: 2" & 2½" 1 ea. Special bent needle for sewing up fowls or wherever sewing with a string is needed. 1 ea. Awning or canvas needle - (can be used on sails too). 1 ea. Carpet or very heavy material needle. **K-1**



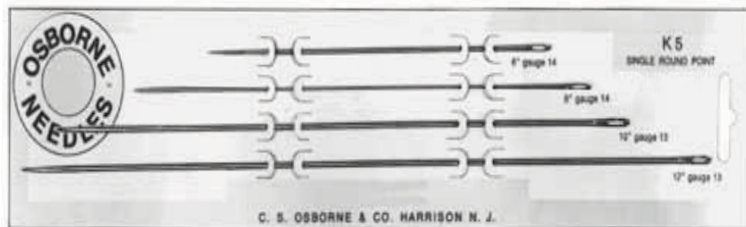
Each kit contains 20 Sewing needles, 10 Darners and 1 Threader. **K-10**



Each card is composed of 4 round point needles in following sizes: 3", 4", 5" & 6". **K-3**



Each card is composed of 4 diamond point needles in following sizes: 3", 4", 5" & 6". **K-4**



Each kit contains 1 ea. of sizes 6", 8", 10" & 12". **K-5**



Each kit contains 25 assorted handsewing needles. 10 ea. #7, 10 ea. #5, 5 ea. #3. **K-11**



Each kit contains 5 Chenille & 5 Tapestry needles. 1 ea. #18, 2 ea. #20, 2 ea. #22. **K-12**



Each kit contains 12 assorted Darners sizes 0/5. **K-15**

Awls, Hafts & Lacing Tools



#31 CURVED SEWING AWL,
SIZES: 2 1/2", 3 & 3 1/2 Flat Point.



#32 STABBING AWL
SIZES: 2", 2 1/2 & 3 Round Point.



HARNESS AWLS
SIZES: 1 1/2", 1 3/4, 2, 2 1/4, 2 1/2, 2 5/8, 2 3/4, 2 7/8 & 3" Diamond Point.



#4 HEAVY DUTY SCRATCH AWL Plastic Handle.

SIZE NO.	BLADE LENGTH	OVERALL LENGTH
1	2 1/2"	4 1/2"
2	3 1/2"	5 1/2"
3	4 1/2"	6 3/4"
4	5 1/2"	7 3/4"



#478 SCRATCH AWL
Useful small awl for piercing leather, canvas.
Blade 2" - wood handle.



#145 AWL HAFT Varnished hardwood Maple.
Holds all Osborne Awls.



#477 LACING FID. BLUNT AWL
For stretching and enlarging holes in leather for easy lacing. 2 1/4" blade, 5" overall.



#103 1/2 LACING PLIER
5 1/2" long.



#8 COLLAR AWL
Sharp cutting edges to punch its own slit.
For heavy laces.



#266 SEWING PALM
A strong palm with an iron thimble encased in vinyl.
Available in Right or Left Hand.



#155 OSBORNE REVOLVING PUNCH

Six tube punch known as the Best Made.

The throat distance from the cutting tube to the back of jaw is 1 1/2". Replacement tubes, anvil & springs available.

Note: punches tubes 155 & 153 are not interchangeable.



#153 OSBORNE SPRING PUNCH

The Professionals Choice. Made in sizes 000 to 10.

Replacement parts available. There are three different frames. Tube sizes 000 TO 7 fit the same frame and are interchangeable. Tube 8 fits the No. 8 frame only.

Tubes 9 & 10 fit the same frame and are interchangeable.

ACTUAL SIZES OF CUTTING TUBES FOR OSBORNE NOS. 153 AND 155 PUNCHES

Actual Size	•	•	•	•	•	•	•	•	•	•	•	•	•
Size No.	000	00	0	1	2	3	4	5	6	7	8	9	10
Diameter Size	3/64	1/16	5/64	3/32	7/64	1/8	5/32	11/64	3/16	13/64	1/4	9/32	5/16



#223 OSBORNE REVOLVING PUNCH

The Crafters Choice, economically priced.

Furnished with tube sizes 0 - 6.

#245 BELT PUNCH

Self cleaning, requires only a light blow with a mallet to cut with ease. These punches should be used on a wood or plastic cutting block. Use a wooden or rawhide mallet or maul, steel hammers not recommended.

ACTUAL SIZES OF CUTTING TUBES FOR OSBORNE NO. 245 PUNCH

Actual Size	•	•	•	•	•	•	•	•	•	•	•
Size No.	00	0	1	2	3	4	5	6	7	8	9
Diameter Size	1/16	5/64	3/32	1/8	9/64	5/32	11/64	3/16	13/64	7/32	1/4

Actual Size	•	•	•	•	•	•	•	•	•	•
Size No.	10	11	12	13	14	15	16	1/2	9/16	5/8
Diameter Size	17/64	9/32	5/16	11/32	3/8	13/32	7/16	—	—	—

Hand Tools

**THESE PUNCHES SHOULD BE USED ON A WOOD OR PLASTIC CUTTING BLOCK.
USE A WOODEN OR RAWHIDE MALLET OR MAUL, STEEL HAMMERS ARE NOT RECOMMENDED.**



#150 OSBORNE STRAP END PUNCH

Sizes 1/4, 3/8, 1/2, 5/8, 3/4, 7/8, 1, 1 1/8, 1 1/4, 1 3/8, 1 1/2, 1 5/8, 1 3/4, 1 7/8, 2"



#0150 OSBORNE STRAP END PUNCH

Sizes 1/4, 3/8, 1/2, 5/8, 3/4, 7/8, 1, 1 1/8, 1 1/4, 1 3/8, 1 1/2, 1 5/8, 1 3/4, 1 7/8, 2"



#151 OSBORNE BAG OR OBLONG PUNCH

Taper Clearance. Sizes: 1/4", 3/8, 1/2, 5/8, 3/4, 7/8, 1, 1 1/8, 1 1/4, 1 3/8, 1 1/2, 1 3/4, 2"



#65 OSBORNE SHOE HAMMER

Drop Forged Steel, polished head. Useful for making sharp folds, adhering cemented parts together, tapping overhand stitches, lacing.

Length of head 5 5/8", 1 1/4" head face, 9 1/2" handle. 14 oz.



#66 OSBORNE HAMMER

Drop Forged Steel. Head length 5 5/8", 1 1/4 head face, 9 1/2" handle.

14 oz.



#222 OSBORNE MAGNETIC TACK HAMMER

Forged Steel, fully polished head.

Length of head 5 1/2", 5/16 magnetic head face. 13 oz.



#227 OSBORNE WOOD HEEL HAMMER

Forged Steel fully polished.

Used by saddle makers, leather workers.

Head length 6 3/8", 7/16 head face.

10 oz.



#55 OSBORNE SADDLERS HAMMER

Oval Walnut handle. The smooth, blunt end of the hammer is ideal to form leather and drive tacks in hard to reach places.

Head length 7", Head face 1/2".

16 oz.



#216 OSBORNE GROMMET INSERTING DIE

Sets plain rim washers and grommets.

Sizes: 00, 0, 1, 2, 3, 4.



#235 MIDGET GROMMET DIE

Sets plain rim washers and grommets.

Sizes: 00, 0, 1, 2, 3, 4. For home & hobbyists.



#K235 OSBORNE GROMMET KIT

A complete and affordable kit for consumer use. Each kit contains a grommet die, a whole punch, three dozen brass plain grommets and washers, a small cutting board and complete instructions. Sizes: 00, 0, 1, 2, 3, 4.



OSBORNE GROMMETS AND WASHERS

SIZE NO.	DIAMETER OF HOLE
00	3/16"
0	1/4"
1	9/32"
2	3/8"
3	7/16"
4	1/2"
5	5/8"
6	13/16"

#G1 Brass or #N1 Nickel. Boxed 1 Gross Per Box.



#51 1/2 OSBORNE DRAW GAUGE

Aluminum handle draw gauge. Used for cutting leather straps any width up to 4 inches. Replacement parts available.

Hand Tools



#34 OSBORNE SCRATCH COMPASS

Includes one point and three scratchers, small, medium & large. For gouging circles or used along the edge for gouging sewing channels.



#106 WING DIVIDER

Sizes: 6, 8, 10 & 12".



#464 BONE FOLDER

Genuine cattle bone for pasting & folding. 6 1/4" long.



#125 EDGE TOOL

Easily bevels and rounds off edges of straps. Hardwood handle.

Sizes: #00- 3/32", #0- 1/8", #1- 9/64", #2- 5/32", #3- 3/16", #4- 13/64", #5- 7/32", #6- 3/8"



#127.5 BISSENETTE EDGE TOOL

This edger can be pushed or pulled to bevel the edges. Hardwood handle.

Sizes: #00- 3/32", #0- 1/8", #1- 9/64", #2- 5/32", #3- 3/16", #4- 13/64", #5- 7/32", #6- 3/8"



#133 WESTERN EDGER

Best suited for saddlery and similar work. Hardwood handle.

Sizes: #00- 3/32", #0- 1/8", #1- 9/64", #2- 5/32", #3- 3/16", #4- 13/64", #5- 7/32", #6- 3/8"



#21 OSBORNE CREASER

Single edge creaser will enhance the edge. Round edges with edge tool before using the creaser.



#86 OSBORNE SPLITTING MACHINE

Sturdy cast iron frame, 6" hollow ground blade. Easy fine tuning for even splitting of any thickness of leather.

Table of Contents

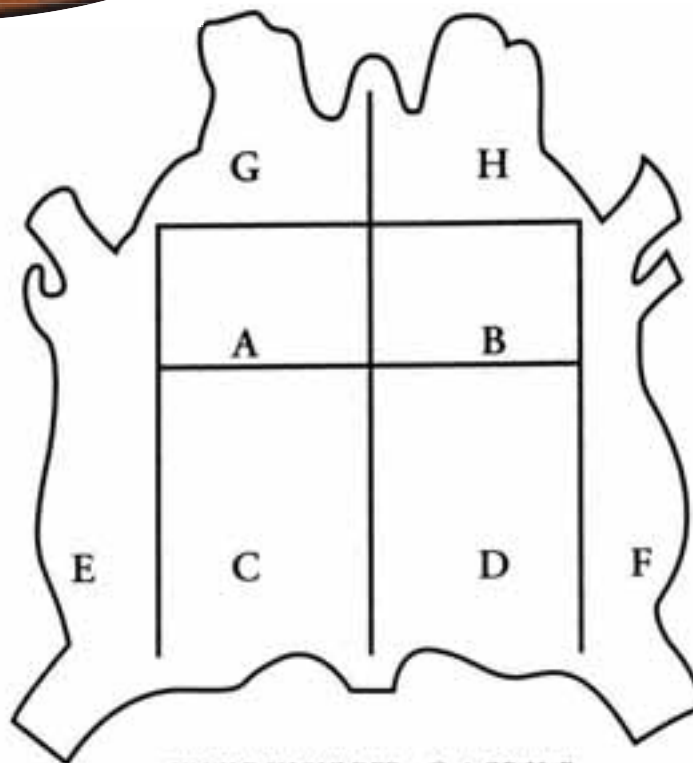
Groovers, Overstitchers.....	33
Punch Sets.....	34
Lace Chisels.....	35
Lace Cutters.....	36
Knives, Strap Cutters.....	37
Edgers, Gouges.....	30, 38
Swivel Knives.....	39, 52
Modelers	40
Crafttool Stamps.....	41-42
Stamping Tools & Sets	43
Barry King Stamps	44-52
Barry King Mauls.....	52
Mallets	53
Belt Blanks, Alpha & Number Stamps	54
Durable Snaps & Setters.....	55-56
Rivets	56
Clips, Spots & Screw & Post	57
Hardware, Rings, Snaps, Buckles, Dees	58-60
Dye, Applicators	61-62
Stains, Finishes	63
Edge & Top Finishes	64
Cleaners, Conditioners.....	65-66
Adhesives, Glue Pots.....	67
Concho's.....	68-70
Buckle Sets	71
Kits, Books	72
Books	73-74
Patterns.....	74-77
Velcro, Zippers.....	78
Leather Tool Sharpening.....	79-80

Leather Terminology

Aniline Finish	Full grain leather which has been colored with dyestuffs rather than pigments. Usually topped with a protein, resin, or lacquer protective coating, can also be waxed.
Bark Tanned	Leathers which have been tanned with vegetable materials that are derived from certain plants and woods, often called Bark tannins.
Buffed	Leather which has been smoothed or sueded by mechanical sanding.
Chrome Tanned	Leathers which have been tanned with soluble chromium salts, primarily basic chromium Sulfate. Currently the most widely used tannage in the U.S.A.
Combination Tanned	Leathers tanned with more than one tanning agent. For example, initially chrome-tanned followed by a second tannage (called Retan) with vegetable materials. Latigo is often made by combination tanning.
Embossed	A mechanical process of permanently imprinting a great variety of unique grain effects into the leather surface. Done under considerable heat and pressure.
Full Grain	Grain leather in which only the hair has been removed. Usually carries either an aniline or glazed finish.
Glazed Finish	Similar to an aniline finish except that the leather surface is polished to a high luster by the action of glass or steel rollers under tremendous pressure.
Grain Leather	Hides and skins which have been processed with the grain, or outer surface, dressed for end use.
Leather	The pelt of an animal which has been transformed by tanning into a non-putrescible material.
Oil Tanned	Leathers tanned with certain fish oils. Produces a very soft, pliable leather such as chamois.
Pigment Finish	A process of coloring and coating the leather surface with colored pigments dispersed in film forming chemicals called binders. The latter can be tailor-made to produce surfaces that are Highly resistant to wear, fading, etc.
Split	The underneath layer of side leather which has been "split" off. Devoid of a natural grain, it may be either sueded or pigment finished and embossed.
Suede	Leathers that are finished by buffing the flesh side (opposite the grain side) to produce a nap. The term refers to the napping process, and is unrelated to the type of skin used.
Vegetable Tanned	Leathers which have been tanned with vegetable materials that are derived from certain plants and woods, often called Bark tannins.

How Leather is sold. Garment and upholstery leathers are sold according to the surface area of the skin. Large animal skins such as cow, are often sold by the side, (a whole hide cut in half along the backbone.) All leather is computer measured at the tannery. The measurement is marked in square feet on the flesh side. Customers are charged according to this machine measurement.

Hide Definitions



SINGLE SHOULDER = G+A OR H+B
 DOUBLE SHOULDER = A+B
 BACK = G+A+C OR B+D+H
 SIDE = G+A+C+E OR B+D+F+H
 DOUBLE BACK = A+B+C+D+G+H
 SINGLE BEND = C OR D
 BELLY = E OR F

LEATHER THICKNESS CONVERSION CHART

OUNCES IRONS FRACTIONAL INCH DECIMAL INCH MILLIMETERS

1	.75	1/64	.016	.41
2	1.5	1/32	.031	.78
3	2.25	3/64	.047	1.19
4	3.00	1/16	.063	1.60
5	3.75	5/64	.078	1.98
6	4.50	3/32	.094	2.39
7	5.25	7/64	.109	2.78
8	6.00	1/8	.125	3.18
9	6.75	9/64	.141	3.58
10	7.50	5/32	.156	3.96
11	8.25	11/64	.172	4.37
12	9.00	3/16	.188	4.78
13	9.75	13/64	.203	5.16
14	10.50	7/32	.219	5.56

Thickness or Weight? Leather thickness is usually measured in terms of ounces. In an effort to make leather a uniform thickness, tanneries run hides through a splitting machine. However there is a slight thickness variation throughout any given hide. This is why leathers are usually shown with a range of thickness, such as 4-5 or 6 to 7 oz. One square foot cut from either hide would be 4-5 oz, or 6 to 7 oz respectively.

Leather



Saddle Skirting



HERMANN OAK SADDLE SKIRTING

Carves and stamps superbly.
It molds and forms to the seat with ease.
This leather accepts oils or dyes evenly for a deep, rich color.

11/13 OZ RUSSET
13/15 OZ RUSSET
14/15 OZ RUSSET

AVAILABLE IN GRADES #1, #2 & MIDGRADE



NATURAL LONGWOOL LAMBSKIN RUGS

COLORS AND HANDCRAFTED IN A SUBTLE MIX OF HUES
AND SIZES, THE WORLDS FINEST NATURAL LAMBSKIN
OOZES LUXURY, OPULENCE AND STYLE.

AVAILABLE IN SINGLE, DOUBLE, SEXTO AND QUATRO

BARK TANNED WOOLSKIN

#1 GRADE – USED FOR LINING SADDLES AND SCABBARDS.
3/4" THICKNESS
AVAILABLE IN SIZES: 10-15 sq. ft.

LEATHER GRADING

A GRADE ALLOWS FOR 1 TO 2 SMALL DEFECTS
B GRADE ALLOWS FOR 3 – 4 SMALL DEFECTS
MIDGRADE ALLOWS UP TO 12" OF DEFECT
TR (TANNERY RUN) IS TANNERY TERM USED TO IMPLY A COMBINATION OF GRADES OF LEATHER.
A TEN SIDE MIX WOULD INCLUDE APPROXIMATELY 30% A, 50% B & 20% C.



Tooling & Carving



HERMANN OAK STRAP & TOOLING SIDES

Natural, un-dyed leather, carves & tools easily. Dyes evenly and oils to rich vibrant colors. Also available in backs, single shoulders or belly strips.

Weights, thickness and Common Uses

2/3 OZ 1/32" - 3/64"	For linings, billfolds backs
3/4 OZ 3/64" - 1/16"	For billfolds, secretaries, clutch purses
4/5 OZ 1/16" - 5/64"	For knife sheathes, chap yokes
5/6 OZ 5/64" - 3/32"	For photo albums, bags, sheathes
6/7 OZ 3/32" - 7/64"	For guitar straps, camera cases, tack
7/8 OZ 7/64" - 1/8"	For belts, holsters, journal covers
8/9 OZ 1/8" - 9/64"	For belts, scabbards
9/10 OZ 9/64" - 5/32"	For scabbards, gun belts
10/11 OZ 5/32" - 11/64"	For heavy straps
11-12 OZ 11/64" - 3/16"	For light weight saddles

IMPORTED DOUBLE SHOULDERS

Excellent for belts, purses, sheathes & scabbards.

6/7 OZ 3/32" - 7/64"

7/8 OZ 7/64" - 1/8"

8/9 OZ 1/8" - 9/64"

9/10 OZ 9/64" 5/32"



Latigo & Harness

PREMIUM LATIGO SIDES

Chrome veg retan latigo made from US steer hides.
Light oil and wax hand, brand free.

Weights, thickness & common uses:

5/7 oz 5/64" - 7/64" Lace & string weight

7/8 oz 7/64 - 1/8" Great for reins & tack, belts

8-10 oz 1/8 - 5/32" Latigos, heavy belts

10-12 oz 5/32 - 3/16" Latigos, straps



ALUM-TANNED BURGUNDY LATIGO

5/7 oz 5/64" - 7/64" Great for braiders, whipmakers!

Alum-tanned Indian Tan Latigo

5/7 oz 5/64 - 7/64 Durable & strong

HERMANN OAK HARNESS

Old world harness, drum stuffed with tallow for

Excellent strength and ease of cutting.

Available in 9/11, & 12 oz up Russet.

MTL THOROUGHbred HARNESS

Heavy U.S. steers, Outfitters choice for
strength and mellow hand.

Available in 10/12, 13-15 & 15-18 oz

Russet or Black.

MTL NEW WORLD HARNESS

Heavily waxed and stuffed, medium hand.

Ideal for weighted reins, 15/18 oz.

ALPINE BOOT LEATHER

Available colors: Black & Brown

7-8 oz smooth finish.



Chap Leather

MTL CHAP SIDES

4-5 oz. Light finish with a medium soft temper.
Sides average 20-25 sqft.



BLACK



CHESTNUT



BUCKSKIN



CHOCOLATE



COCOA



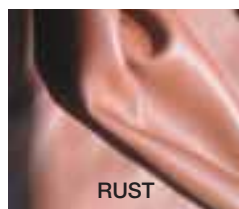
GINGER



BUTTER



TOBACCO



RUST



WHITE

Montana Leather offers a large selection of odd lot, tannery over-run leathers in addition to our regularly stocked items at fantastic prices. Call for current availability or samples.



METALLIC COWSIDES 3-4 oz.



BLUE



RED



GREEN



GOLD



SILVER

Chap Splits

Chap Splits 4-4.5 oz. Soft velvet suede feel.
Skins average 10-14 sq. ft.

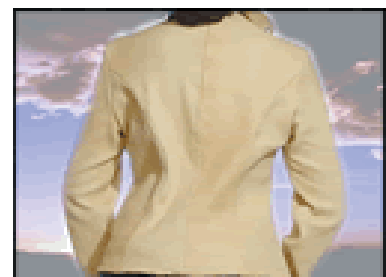


Pearl Apron Split/Mule Hide 7/8 oz 20 sq. ft. average.
Used for farrier aprons, horn wraps. (not pictured)

Garment Splits

SOFT GARMENT SPLITS

2-3 oz 6-9 sqft skin average. Leather Garments are always in style and you are going to love these suedes. You will get the ruggedness and durability with a soft, buckskin feel. Perfect for vests or jackets, moccasins & lighter weight chaps. Supple and lightweight, but tough enough to give you many years of wear. Regular care for suede and split includes brushing with a suede brush to clean and raise the nap. For stains use a suede and nubuck eraser. Protect with a water & stain protector.



Plonge

Cowhide 1.5 –2 oz. 20-28 sqft average. Lamb touch, light weight, soft & supple - excellent for garments.



Description on Black varieties.

Black – is standard silky smooth hand.

Black NF – has a naked natural feel.

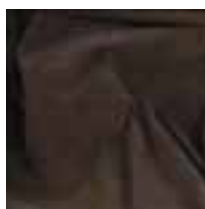
Black Corral – Slightly heavier at 2 - 2.5 oz, a bit smoother, less drape than standard plonge.

Pig Suede

Excellent super soft, form fitting garment leather.
Can be sewn on home sewing machines.
11 –15 ft average, 1.5—2 oz.



BEIGE



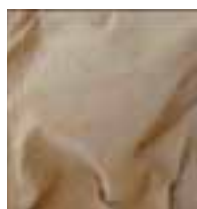
BROWN



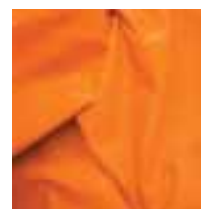
BURGUNDY



BUTTER



CAMEL



TANGERINE



CURRY



CHESTNUT



COGNAC



TEAL



DENIM



CORAL



DESERT



FOREST



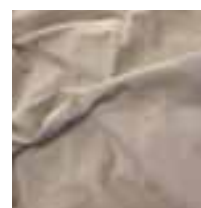
FUCHSIA



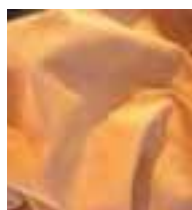
LODEN



PERIWINKLE



CINNAMON



WHEAT



WHITE



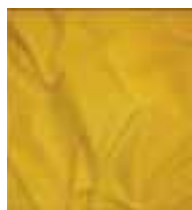
EGGPLANT



ELECTRIC BLUE



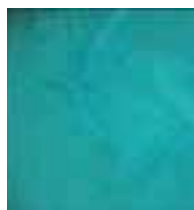
EMERALD



GOLD



HOT PINK



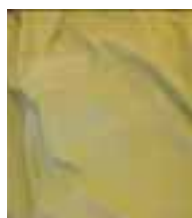
JADE



LAVENDAR



LIGHT GREY



LIME



LUGGAGE



CRANBERRY

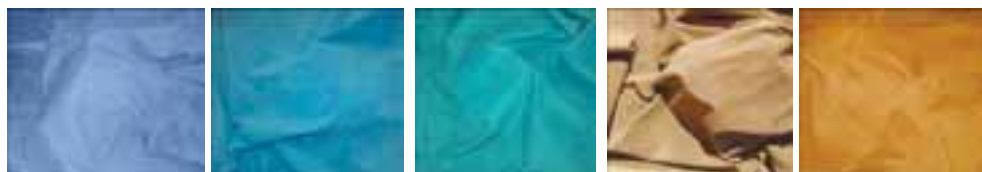


MOSS



NAPA BLACK

Pig Suede



NAVY

OCEAN

TURQUOISE

TAUPE

TOBACCO



PINK

PURPLE

RED

ROYAL BLUE

SADDLE

SKY BLUE

METALLIC PIG SKIN - 1.5—2 OZ 11– 15 sqft average.
Perfect for adding some flash to any garment.



GUNMETAL

COPPER

LIME

NAVY

PLATINUM

BLUE



GOLD

RED

TURQUOISE

VIOLET

PINK

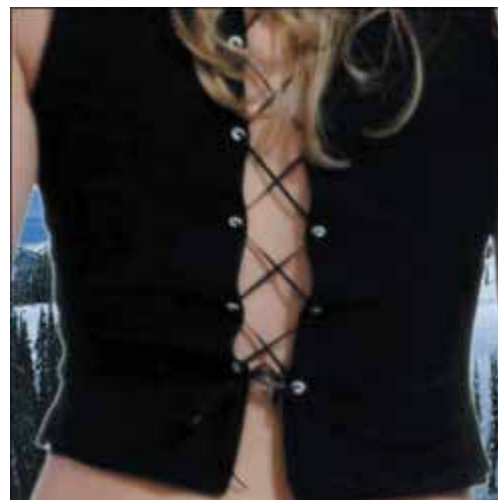
SILVER



HOT PINK

EMERALD

PENNY COPPER



Lambskin

Lambskin 2 –2.5 oz 6 - 8 sqft average. Semi-aniline.
These have to be the most luxurious garment leathers
you will ever work with. Especially soft and rich in color.



BABY BLUE



BANANAN



BEIGE



BLACK



BROWN



BURGUNDY



DISTRESSED



EGGPLANT



FOREST



FUCHIA



TEAL



GREY



ROYAL



TAUPE



TOBACCO



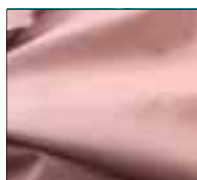
TURQUOISE



WHITE



YELLOW



PINK



LILAC



LIME



MINT



NAVY



OLIVE



ORANGE



POWDER BLUE



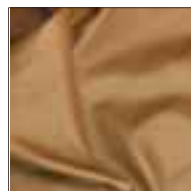
PURPLE



RASPBERRY



RED



MAHOGANY

Soft and pliable.
Can be sewn on home
sewing machines.



**#121 OSBORNE TACK & STAPLE LIFTER**

Blade length 2 1/4", overall length 6 1/2".

**#122 CLAW TOOL**

Drop Forged Steel Blade and Hardwood Handle.
7 1/4" overall length.

**#202 CLAW TOOL**

Sturdy forged steel cobbler's claw tool
in a translucent amber handle.
6 3/4" overall length.

**#799 HEEL REMOVER**

Wide blade with curved point.
7 1/2" overall length.

**#93 SHOEMAKER PINCER**

Cutting edge outside flush cut, inside bevel cut.
8" length.

**#233 LASTING PINCER**

Drop forged.
8 1/2" overall length.

**#10 OSBORNE CATTLE PLIER**

The forged nickel plated cattle plier is used to
tightly form the leathers around the cantle of
a saddle. Jaws are smooth.
1 3/4" jaw depth.

**#98 SADDLERS DUCKBILL PLIER**

Available in smooth or serrated jaw.

**#20 C OSBORNE WOOD CREASER**

Makes creases in four sizes.

Hand Tools



SQUARE POINT KNIFE

Length of blade 3 3/4", width 5/8".



CURVED LIP KNIFE

Specialty shoe trade knife.



#78 OSBORNE BROAD POINT KNIFE

Round polished hardwood handle, length of blade 5", width 1 1/8".



BEVEL POINT MCKAY KNIFE

Used for skiving and edge trimming on leather.
#1 Short Blade 2". #2 Long Blade 2 3/4".



#70 OSBORNE ROUND KNIFE

Forged blade edge made with the highest quality steel. Oval hardwood handle. The World's Leading round knife since 1826.



#71 OSBORNE HEAD KNIFE

Leather Worker's Choice.



#925 OSBORNE SKIVE

Easily skives leather. This essential tool is fitted with a special razor blade. Extra blades:

925-D 20 Blade Safety Dispenser.

925-100 Bulk Pack of 100 Blades.



#708 EZ CUT LEATHER SHEAR

This shear cuts up to 8 oz. leather with ease. Chrome plated, blunt point. Overall length 8 1/4", Length of cut 3" 7 oz.



#164 OBSORNE BENT TRIMMER SHEAR

Forged steel, enameled handles, polished blades. An inexpensive shear ideal for crafters.

Hand Tools



3209-00 4-IN-1 AWL SET

Deluxe set features four styles of interchangeable blades. Includes two awl blades, one lacing fid blade and one scratch awl blade.



8079 OVERSTITCHERS

Can be used to mark the stitch spacing and to press stitches to form a machine sewn look.

8079-05, five holes per inch.

8079-06, six holes per inch.

8079-07, seven holes per inch.

8079-08, eight holes per inch.



88081-00 PRO STITCHING GROOVER SET

The blade on this tool is on the same axis as the handle, providing better control and downward pressure on the blade. Also comes with a small modeling spoon for creasing or decorative borders. Groove width adjusts from 1/16" to 1 7/16".

88081-01 EXTRA GROOVING BLADE

88081-02 EXTRA GROOVING SPOON



8091-00 OVERSTITCHER SET

comes with four removable spacing-overstitch wheels in the most popular sizes: 5, 6, 7 and 8 stitches per inch.

8069-00 SADDLEMAKERS GROOVER

Just loosen the chuck with your fingers, position the blade and retighten. No extra tools needed to adjust the blade. Make a clean groove from 1/16" to 1 1/2". Blade included

8079-00 EXTRA BLADE



Hand Tools



8074-00 ADJUSTABLE GROOVER

Designed to measure and gouge grooves in one step. Width adjusts from 1/16" to 3/4".

8075-00 EXTRA BLADE



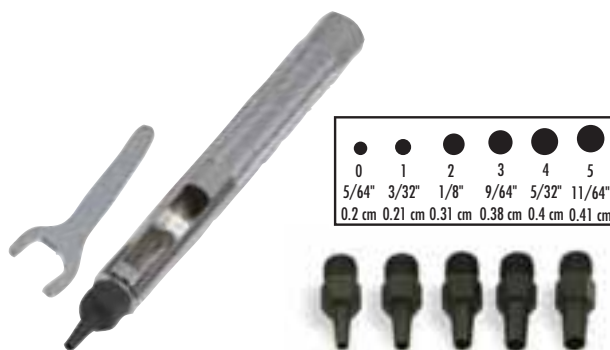
3132-00 LACING AND STITCHING PONY

Finish projects faster using our lacing pony. Holds the item firmly in place so you can use both hands for lacing or sewing. Three inch grip, 15 1/2" tall with locking wing nut.



3005-00 OVAL PUNCH SET

A must have for belt makers. Set includes one handle with six interchangeable tubes.



3003-00 MINI PUNCH SET

Tempered chrome plated steel handle. The most used sizes of tubes for snaps, rivets, belts etc. Contains tube size 0 to 5.



3004-00 MAXI PUNCH SET

Tube sizes include 6 to 10 and 12.

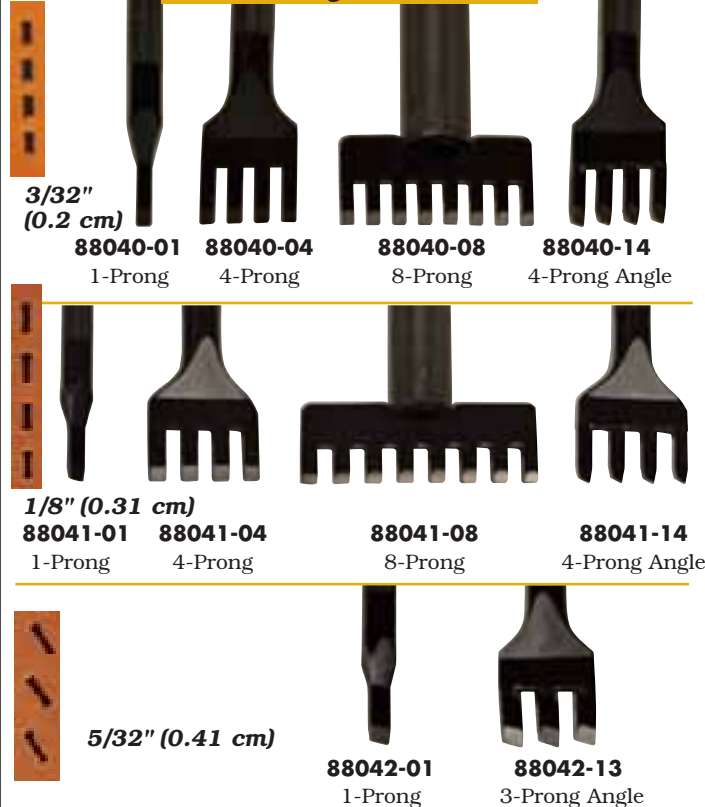
LACING CHISELS

DIAMOND STITCHING CHISELS

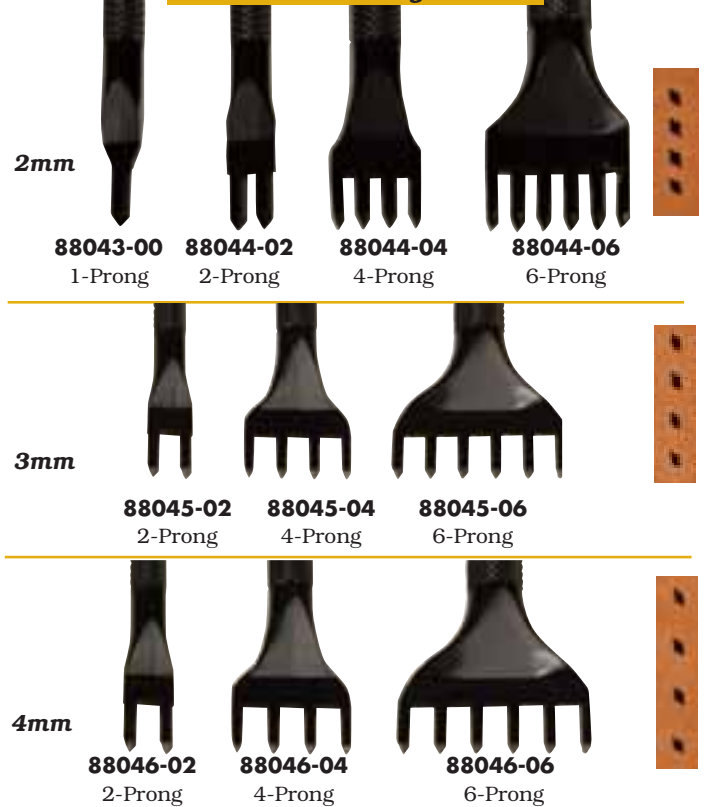
Pro Line Chisels

Made from 41xx steel, these chisels have incredible strength and toughness due to the case hardening process after the chisels are formed. Beautifully finished with a black electrophoresis coating to prevent surface corrosion and provide wear resistance. Used with our Professional Cutting Board #3465-00, these elite chisels will perform like a charm and provide you years of use.

Lacing Chisels



Diamond Stitching Chisels



3052-00 FOUR IN ONE PUNCH

Punches 3/32" holes quickly and evenly in up to 3 to 4 oz leather.

3053-00 EXTRA FOUR IN ONE PUNCH TUBES



Hole Sizes in millimeters and inches				
.039"	.049"	.059"	.078"	.098"
1	1.25	1.5	2	2.5

3229-00 HAND SEWING PUNCH

Anyone that works with lightweight leather will want to add this tool to their workshop. Works well with leather or rawhides up to 4 oz.

3229-11 REPLACEMENT TIP



Hand Tools



OBLONG PUNCHES

A must for any leather project with buckles.

31564-00 1/2"

31566-00 3/4"

31567-00 1"



3112-00 JERRY STRIPPER LACE CUTTER

Cut your own lace, fringe, braiding strips. Cuts in multiples of 1/8" up to 3". Works best on firmer 3 to 5 oz leathers.

3061-00 Replacement blades 5 per package.



3784-00 LACE MAKER

Save money by cutting your own lace. Cuts 1/8" or 3/16" strips from leathers up to 5 oz. Includes one blade.

925-D 20 Blade Safety Dispenser.

925-100 Bulk Pack of 100 Blades.



35013-00 STRAIGHT TRIM KNIFE

General use knife for cutting or skiving. Blade is 2 3/4" with a 4" handle.



3082-00 AUSTRALIAN STRANDER

Will adjust to cut lace up to 1/2" wide.

3002-00 10 replacement blades

3002-20 1000 replacement blades



3595-00 INDUSTRIAL KNIFE SET

Includes: #9 blade: 5/16" x 2 1/4" deep curve, 7/8 radius narrow point, and #11 blade: 5/16 x 2 1/4" straight grind on slanted edge.

3596-09 EXTRA #9 BLADE 3/PKG

3031-00 PRECISION CRAFT KNIFE

Surgical steel blade, great for trimming.
Includes one blade protective cap for storage.

3033-00 REPLACEMENT BLADES 5/PKG



WOODEN STRAP CUTTER

Best designed tool for cutting straps & belts.
One blade included, cuts up to 4" wide.

Extra blades 5/pkg



3025-00 SUPER SKIVER

Contoured handled skiver for easy grip.
3 blades included.

925-D 20 Blade Safety Dispenser.

925-100 Bulk Pack of 100 Blades.

Hand Tools



31811-00 ADJUSTABLE V GOUGE

Ideal for gouging fold lines. Adjusts to any depth in seconds. Contoured wood handle.



8082-00 ADJUSTABLE V GOUGE

Ideal for making sharp folds. Die cast 1 1/2 x 2 3/4 x 3/4".



8072-00 ADJUSTABLE CREASER

Adjusts quickly from a fine line to 5/16".



KEEN EDGE BEVELER

Excellent for trimming and rounding edges. Hardwood handle.

**8077-02 Size 2,
8077-03 Size 3,
8077-04 Size 4.**



8116-00

3 IN 1 BONE FOLDER-CREASER-SLICER

Made from durable nylon with removable head.

EDGE BEVELERS

Bevel and round off edges of leather. The larger the size, the more leather removed.

**8076-02 Size 2
8076-03 Size 3
8076-04 Size 4
8076-05 Size 5**



Swivel Knives & Blades



**8002-00 DELUXE
ADJUSTABLE SWIVEL KNIFE**
Chrome plated knife adjusts to
a custom fit. Includes 3/8"
straight blade.



**8000-00 NON-ADJUSTABLE
SWIVEL KNIFE**
2 1/4" long chrome plated
handle. Includes a
3/8" straight blade.



8014 **8018** **8019**

STEEL ANGLE & HOLLOW GROUND BLADES
8014-00 1/4" Filigree
8018-00 1/4" Angle
8019-00 1/4" Hollow Ground



8026 **8027**

CERAMIC BLADES
These polished ceramic swivel knife
blades glide smoothly through leather.
8026-00 1/4" Angle
8027-00 1/4" Filigree



88118-00 KEEN EDGE SHARPENING GUIDE
Keeps your swivel knife blade in the proper
position and at the correct angle to give you
sharper edges.



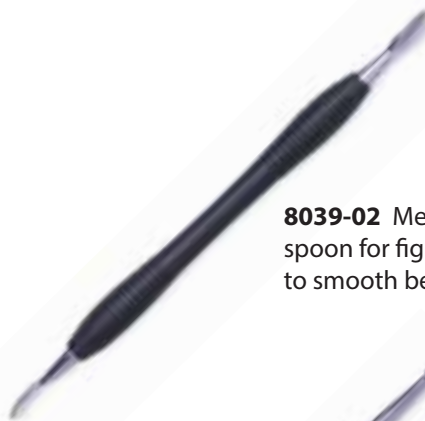
3325-00 LEATHER STROP
Keeps your swivel knife blades and cutting
knives with the sharpest edge. One side is
smooth grain side, the other is rough flesh side.
With jewelers rouge applied, the rough side will
provide more abrasion than the smooth side.

3323-00 White Jeweler's Rouge

Modelers/ Hand Tools



8039-01 Fine/small round spoon for figure carving and to smooth beveling marks.



8039-02 Med/large round spoon for figure carving and to smooth beveling marks.



8039-03 Med/large pointed spoon for figure carving and to smooth beveling marks.



8039-04 Small/large ball is the perfect tool for embossing.



8039-05 Small/large undercut is for beveling and outlining.



8039-06 Point/stylus works for all your transfer needs.



3204-00 BORDER TOOL
Fast and easy way to carve perfect borders.
Carves width up to 1 1/2".
Fits 3/8" swivel blade.



TRACING FILM

Trace carving designs on this film, then transfer to cased tooling leather, 20" wide.

3500-00 1 yd TRACING FILM
3500-10 10 yd TRACING FILM

Stamps

RAFTOOL STAMPS

Background Tools



Matting Tools



Undercut Bevelers

Lined Bevelers



Smooth Bevelers



Checked Bevelers



Coarse Bevelers



Camouflage



Pear Shaders



Veiners



V417

V955

V462

V403

V402

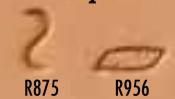
V821

V404

Shell Tools



Ropes



Stops

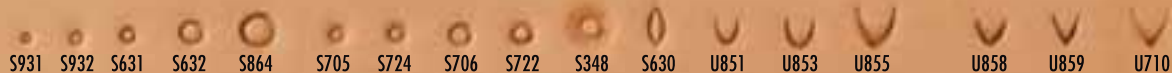


Sunbursts



Stamps

Seeders



Mule Foot

Flower Centers



Border Stamps



Geometric



Basketweave



Leaves & Flowers



Special



Stars



Stamping Tools & Sets



Crafttool® Basic Seven Tool Set

Set includes swivel knife, mini screwdriver, plus the six basic tools used in most floral patterns. They feature heavy-duty construction and are precision made. **AGES 8+**
8170-00

Crafttool® Basic Stamping Set

This set has the same designs as the Basic Seven Tool Set, but cast from a less expensive metal. The lower price makes this set an ideal way to introduce youth groups to the world of leathercraft. Swivel knife sold separately **AGES 8+**
8170-99



Crafttool® Creative Stamping Set

This economically priced set has the most popular tools needed for stamping creative designs. Many designs require just one or two tools. This set also includes Easy Carve Knife with instructions and patterns. **AGES 8+**
46102-00

FLOWER CENTERS



FLOWER CENTERS 8 SEED SIZE 0-3



FLOWER CENTERS 18 SEED SIZE 0-3



FLOWER CENTERS OFFSET SEED SIZE 0-3



FLOWER CENTERS DOUBLE ROW SIZE 1-3



FLOWER CENTERS HEART SIZE 1-2



FLOWER CENTERS PLAIN SIZE 1-5



CENTER SHADERS SIZE 1-2



FLOWER CENTERS 24 SEED OVAL SIZE 1-3



FLOWER CENTERS SPIN SIZE 1-4



FLOWER CENTERS 12 SEED SIZE 0-5



FLOWER CENTERS 24 SEED SIZE 0-3



FLOWER CENTERS CLUSTER SIZE 0-3



FLOWER CENTERS SUNBURST SIZE 0-4



FLOWER CENTERS RING SIZE 1-3



FINE OR MEDIUM CENTER PODS SIZE 0-3



FLOWER CENTERS 6 PETAL SIZE 1-2



FLOWER CENTERS 5 PETAL SIZE 1-4



FLOWER CENTERS 18 SEED OVAL SIZE 1-3

THUMBPRINTS, VEINERS & STOPS



THUMBPRINT SMOOTH
SIZES 000-4



THUMBPRINT HORIZONTAL
SIZES 000-3



THUMBPRINT HORIZONTAL
SIZES 1-4



THUMBPRINT VERTICAL
SIZES 000-3



THUMBPRINT VERTICAL
MEDIUM SIZES 1-4



THUMBPRINT CURVED LEFT
& RIGHT SMOOTH SIZES 1-3



VEINER SMOOTH SIZES 1-3



VEINERS LINED SIZED 1-3



VEINERS LINED & SCALLOPED SIZES 0-4



VEINERS WIGGLER SIZES 1-2



STOP CK SIZES 1-2



STOP SMOOTH SIZES 1-2

GROUNDERS, BEVELERS, LIFTERS & SEEDS



BARGROUNDERS #15 3,5,7,9 HOLE



BARGROUNDERS #18 3,5,7,9 HOLE



BARGROUNDERS #20 3,5,7,9 HOLE



BARGROUNDERS #23 3,5,7,9 HOLE



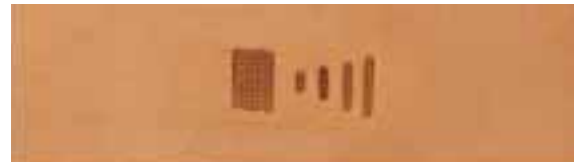
BARGROUNDERS #25 3,5,7,9 HOLE



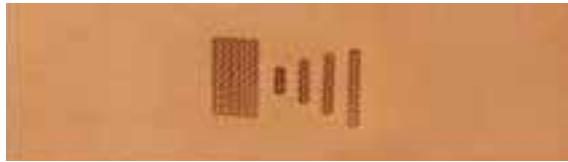
BARGROUNDERS #27 3,5,7,9 HOLE



BARGROUNDERS #30 3,5,7,9 HOLE



BARGROUNDERS #35 3,5,7,9 HOLE



BARGROUNDERS #40 3,5,7,9 HOLE



BARGROUNDERS #45 3,5,7,9 HOLE



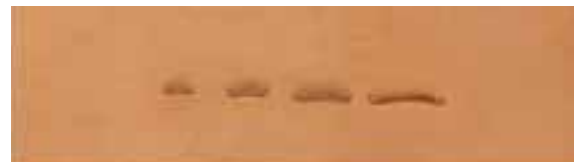
BEVELERS CHECKERED SIZES 00-4



BEVELERS SMOOTH SIZES 00-4



BEVELERS CONCAVE CK SIZES 1-4



BEVELERS CONCAVE SM SIZES 1-4



BEVELERS ROUND CK SIZES 1-4



BEVELERS ROUND SM SIZES 1-4



BEVELERS MEDIUM CHECKERED SIZES 0-4



LIFTERS SIZES 0-4



ROUND GROUNDERS #1 FULL & HALF



ROUND GROUNDERS #1.5 FULL & HALF

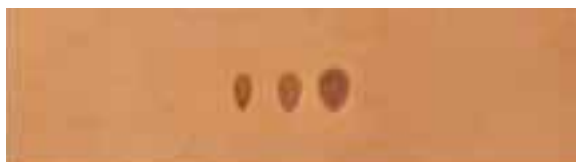


ROUND GROUNDERS #2 FULL & HALF



CHECKERED BACKGROUNDS
FINE CK TEAR DROP SIZES 1-3

GROUNDERS, BEVELERS, LIFTERS & SEEDS



CHECKERED BACK GROUNDERS
MEDIUM CK TEARDROP SIZES 1-3



CHECKERED BACK GROUNDERS
FINE CK OVAL SIZES 1-3



CHECKERED BACK GROUNDERS
MEDIUM CK OVAL SIZES 1-3



SEEDS PLAIN SIZES 0-4



SEEDS LINED SIZES 0-4

CAMOUFLAGE, MULE FEET, LINERS, CUTTERS, TURNBACKS & CROWNERS



LINED CAMOUFLAGE SIZES 0-5



FLUTED CAMOUFLAGE SIZES 0-5



MULE FEET SIZES 00-5



CONTINUOUS MULE FEET STRAIGHT SIZES 1-3



CONTINUOUS MULE FEET LEFT SIZES 1-3



CONTINUOUS MULE FEET RIGHT SIZES 1-3



LEAF LINERS SIZES 1-2



CROWNERS SMOOTH SIZES 1-3

GROUNDERS, BEVELERS, LIFTERS & SEEDS



CROWNERS CHECKERED SIZES 1-3



TURNBACKS SMOOTH SIZES 1-3



TURNBACKS CHECKERED SIZES



LEAF/FLOWER CUTTERS SIZES 1-2

BORDERS



BORDER 7 SEED SIZES 1-4



BORDER 5 SEED SIZES 1-3



BORDER CRESCENT SIZES 0-4



BORDER DOUBLE ROW SIZES 1-3



BORDER 1/4 CIRCLE SEED SIZES 1-4



BORDER WISHBONE SIZES 0-5



BORDER TRI BORDER SIZES 2-3



BORDER HEART SIZES 0-2



BORDER LINED PETAL SIZES 1-2



BORDER UNLINED PETAL SIZES 1-2



BORDER BRAID SIZES 2-3



GEER BRAID SIZES 1-3

BORDERS



BORDER SERPENTINE SIZES 0-4



BORDER SERPENTINE WITH DOT SIZES 0-4



BORDER HOURGLASS SERPENTINE
SMOOTH SIZES 1-4



BORDER ROPE SIZES 1-3



BORDER ARCH SIZES 1-3



BORDER TRI AZTEC SIZES 1-3



BORDER HOURGLASS SERPENTINE
LINED SIZES 1-4



BORDER EIFFEL SERPENTINE
SIZES 1-2

BASKET STAMPS



BASKET STAMP ROPE SIZES 1-4



BASKET STAMP BRAID SIZES 1-4



BASKET STAMP BAR SIZES 1-4



BASKET STAMP OVAL SIZES 1-3



BASKET STAMP LARGE BAR SIZES 1-3



BASKET STAMPS DOT SIZES 1-4

BASKET STAMPS



BASKET STAMP LARGE DOT SIZES 1-4



BASKET STAMPS HOURGLASS SIZES 1-3



BASKET STAMPS CELTIC SIZES 1-3



BASKET STAMPS PLAIT BRAID SIZES 2-3



BASKET STAMPS HEART SIZES 2-3



BASKET STAMPS DOUBLE ROPE SIZES 1-3



BASKET STAMPS ANGLE SIZES 1-3



BASKET STAMPS STAR SIZES 2-4



BASKET STAMPS LATTICE SIZES 1-3



BASKET STAMPS WICKER SIZES 1-3



CUSTOM BASKET STAMPS SPECIAL ORDER



CUSTOM BRANDS & INITIALS SPECIAL ORDER

GEOMETRICS



GEOMETRICS CRAZY SIZES 0-5



GEOMETRICS BOX SIZES 0-3



GEOMETRICS 3 POINT SNOWFLAKE SIZES 1-3



GEOMETRICS CELTIC SNOWFLAKE SIZES 1-3



GEOMETRICS 6 POINT SNOWFLAKE SIZES 1-3



GEOMETRICS CRESCENT SIZES 2-3



GEOMETRICS SEASHELL SIZES 1-2



GEOMETRICS SEASHELL FILLER SIZES 1-2



GEOMETRICS 6 HOLE FILLER SIZES 1-2



GEOMETRICS WAFFLE SIZES 1-3



GEOMETRICS ASSOCIATION SIZES 1-3



GEOMETRICS BLOCK BASKET SIZES 1-4



GEOMETRICS PLAIN X SIZES 0-4



GEOMETRICS X WITH SEEDS SIZE 0-4



GEOMETRICS BARBWIRE 4 POINT SIZES 1-3



GEOMETRICS BARBWIRE 2 POINT SIZES 1-3

Barry King Stamp Tools



GEOMETRICS TWIST SIZES 1-3



GEOMETRICS SPIN TRI SIZES 1-3



GEOMETRICS DOT TRI SIZES 1-3



GEOMETRICS SPIN BOX SIZES 1-3



GEOMETRICS DOT BOX

GEOMETRICS



GEOMETRICS X TRI SIZES 1-3



GEOMETRICS MULTI DOT TRI SIZES 1-3



GEOMETRICS X BOX SIZES 1-3



GEOMETRICS MULTI DOT BOX



MAULS ROUND & TAPER MAULS

X-SMALL 14 OZ 2" DIAMETER
SMALL 16 & 20 OZ 2" DIAMETER
MEDIUM 24 & 28 OZ 2.5" DIAMETER
MEDIUM-LARGE 32 OZ 2.5" DIAMETER
LARGE 48 & 64 OZ 3" DIAMETER

MAULS



HAMMER STYLE MAUL

X-SMALL 14 OZ 2" DIAMETER
SMALL 16 & 20 OZ 2" DIAMETER
MEDIUM 24 & 28 OZ 2.5" DIAMETER
MEDIUM-LARGE 32 OZ 2.5" DIAMETER
LARGE 48 & 64 OZ 3" DIAMETER



SWIVEL KNIFE

3/8" BARREL
1/4" STRAIGHT BLADE

Mallets



GARLAND RAWHIDE MALLETS

Made from tough, long wearing, water buffalo rawhide.

Made in the USA. Sizes:

Item #	Face Diameter	Weight
11000	1"	2 oz
11001	1 1/4"	4 oz
11002	1 1/2"	6 oz
11003	1 3/4"	9 oz
11004	2"	11 oz
11005	2 3/4"	22 oz
11006	2 3/4"	24 oz

GARLAND PLASTIC MALLETS

Made from Garlands own Gar-Dur ultra-high-molecular-weight plastic. This nonporous material won't mar and is easy to clean.

Sizes:

Item#	Face Diameter	Weight
15001	1 1/4"	4 oz
15002	1 1/2"	6 oz
15003	1 3/4"	9 oz
15004	2 1/8"	14 oz
15005	2 1/2"	19 oz
15006	2 3/4"	24 oz



GARLAND WOODEN MALLETS

These wooden mallets feature precision –turned, hardwood heads, and are perfect for craftsmen and production woodworkers.

Sizes:

Item #	Face Diameter	Weight
12002	2 1/4"	14 oz
12003	2 1/2"	19 oz
12004	2 3/4"	22 oz
12005	3"	27 oz

Belt Blanks/ Misc.



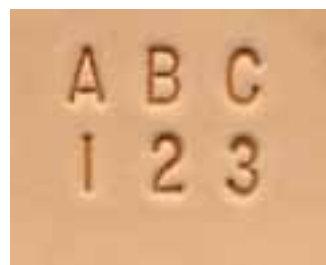
ALPHABET STAMP SETS

Includes A-Z and
a stamp handle

8130-00 1/2"

8131-00 3/4"

8132-00 1"



8137-00 1/4" ALPHABET AND NUMBER SET

Includes A-Z and 0-9 and handle.



NATURAL COWHIDE BELT BLANKS

With or without snaps these top quality tooling leather belt blanks are quick and easy to finish. With snaps fits up to 42" with buckle slot cut.

44546-00 1"

44545-00 1 1/4"

44538-00 1 1/2"

44539-00 1 3/4"

Without snaps, are cut from Hermann Oak Leather tooling sides, the best tooling & stamping leather in the world. Cut to 50" lengths, choose from the following widths: 1, 1 1/4", 1 1/2", 1 3/4", 2", 2 1/4", 2 1/2", 3" & 4"



3101-00 MINI ANVIL

Two pound cast iron anvil mounts to work bench. Great for setting rivets, snaps & jewelry making.



DOG COLLAR SPIKES

Rivet Back

1310-00 1/2" 10 PACK

1310-10 1/2" 100 PACK

1311-01 1 1/4" 10 PACK

1311-10 1 1/4" 100 PACK



SCREWBACK SPIKES

1312-00 1/2" 10 PACK

1312-10 1/2" 100 PACK



SPIKE SETTERS

8109-00 Sets 1/2"

8111-00 Sets 1 1/4"

Snaps & Setting Tools



LINE 20 SNAPS

3/16" post. Sold by dozens, hundreds, thousands. Choose from Brass, Nickel, Antique Brass & Black Plated Steel.



LINE 24 SNAPS

Heavy duty button snap. 3/16" standard post, or 5/16" long post. Sold by dozens, hundreds, thousands. Choose from Brass, Nickel, Antique Brass & Black Plated Steel.



LINE 20 & 24 SNAP SETTERS

8057-00 Sets line 20 snap

8058-00 Sets line 24 snap



8056-00 LINE 20 & 24 SNAP & RIVET ANVIL.

Has a flat and concave side for setting snaps and rivets



8105-00 DELUXE

SNAP-ALL /RIVET SETTER SET

Sets glove, 18 segma, line 20 snaps, line 24 snaps, rapid rivets & double cap rivets.



8108-00 ECONOMY SNAP SETTER

Sets glove, 18 segma snaps, line 20 & 24 snaps.

Snaps & Rivets



3631-00 LINE 24 SNAPS & SETTER KIT

Twenty nickel & brass snaps and two-piece setting tool.



3630-00 LINE 20 SNAPS & SETTER KIT

Twenty nickel & brass snaps and two piece setting tool.



STEEL DOUBLE CAP RIVETS

The choice for a finished look to both sides of your projects.

Colors: Nickel, Brass, Antique Brass

Sizing Chart

	Head Dia	Post Dia	Post Length
2202	5.5 mm	2.5 mm	6 mm
2203	7 mm	3 mm	7.3 mm
2204	9 mm	3 mm	8.1 mm
2205	9 mm	3 mm	10.2 mm
9012	12 mm	3.5 mm	10.8 mm



3632-00 EYELETS & SETTER KIT

Twenty assorted nickel & brass eyelets and two-piece setting tool.



3635-00 RAPID RIVETS & SETTER KIT

Sixty nickel & brass rivets and two-piece setting tool



COPPER RIVETS & BURRS

Packaged in 1 lb. boxes in the following sizes:

8 ga 1/2", 5/8", 3/4" 1",
9 ga 1/2", 5/8", 3/4", 1", 1 1/4" & 1 1/2"
10 ga 1/2", 5/8", 3/4" & 1"
12 ga 5/8", 3/4" 1", 1 1/4", 1 1/2"

Assortment packages available in:
9 ga 3/8" to 3/4" 1/4lb or 1/2 lb. boxes

8110-00 SETTING TOOL

8100-00 RIVET SETTER

A 3" tool with a concave end prevents flattening of caps.

Use with **3101-00** anvil.



8099-00 TUBULAR RIVET SETTER

Made from hardened tool steel.



SAM BROWNE BUTTON/WASHER

BRASS OR NICKEL

1309-01 BRASS

1309-02 NICKEL

PLATED BRASS



8112-00 STUD ANVIL

For Sam Brown hardware.



Screw Posts, Clips



SMALL CLIPS

7/16" X 2 3/4"

1238-00 Nickel Plate

1238-24 Black Plate



MEDIUM CLIPS

7/8" X 3"

1239-00 Nickel Plate

1239-24 Black Plate



LARGE CLIPS

7/8" X 3 1/4"

1240-00 Nickel Plate

1240-24 Black Plate



CLOSED BACK CHICAGO SCREW & POST

Threaded post lets you open and reattach pieces where needed.

Sold by dozen, hundreds or thousands.

1/4" Brass or Nickel

3/8" Brass or Nickel

1/2" Brass or Nickel



ROUND SPOTS

Sets by bending back the two prongs on back side. Available in Brass or Nickel plate. Sold by dozens, hundreds & thousands.

Nickel

Brass

200 - 1/8"

1100 - 1/8"

201 - 3/16"

1101 - 3/16"

202 - 1/4"

1102 - 1/4"

202.5 - 5/16"

1102.5 - 5/16"

203 - 3/8"

1103 - 3/8"

203.5 - 7/16"

1104 - 1/2"

204 - 1/2"

1105 - 5/8"

205 - 5/8"

1106 - 3/4"

206 - 3/4"

1107 - 7/8"

207 - 7/8"

1108 - 1"

208 - 1"



ROUND SPOT SETTERS

8114-01 1/4"

8114-02 3/8"

8114-03 7/16"

8114-04 1/2"

**SPOT SETTERS
ARE SOLD
SEPARATELY**

Buckles, Dees & Rings



75- Square pattern, loose roller.
Nickel plated. 1/2", 5/8", 3/4", 1".



50- Loose roller, heel type.
Solid brass 3/4", 1", 1-1/4", 1-1/2"
Nickle 5/8", 3/4", 7/8", 1", 1-1/4"



12- Wire pattern, bent heel.
Nickel 1/2", 5/8", 3/4", 1"



121- Center bar buckle
Nickel 1/2", 5/8", 3/4", 1", 1-1/4"
Brass- 1/2", 5/8", 3/4", 1"



5- Swedge pattern, nickel, heel type.
Nickel 1/2, 5/8", 3/4", 1", 1-1/4"
Brass 1/2, 5/8", 3/4", 1", 1-1/4"



150- Center bar, loose roller nickel.
Nickel 5/8", 3/4", 1", 1-1/4", 1-1/2", 1-3/4".
Brass 5/8", 3/4", 1", 1-1/4", 1-1/2".



40- Center bar, loose roller nickel.
1/2", 5/8", 3/4", 1"



210 Conway buckle-
Nickel 1/2", 5/8", 3/4", 1", 1-1/4", 1-1/2"
Brass 1/2", 5/8", 3/4", 1", 1-1/4", 1-1/2"



5705- Center bar, swedge pattern,
Brass and Nickel.
5/8", 3/4", 1", 1-1/4".



132 Cart Buckle
Nickel or Brass 5/8", 3/4", 1", 1 1/4".
Stainless Steel. 1/2", 5/8", 3/4", 1".



999 Roller Buckle- Square, loose collar.
Nickel plated 3/4", 1", 1-1/4", 1-1/2", 1-3/4", 2"
Brass 3/4", 1", 1-1/4", 1-1/2", 1-3/4", 2"



452 DEE-
Nickel
1/2", 5/8", 3/4", 1", 1-1/4"



O Ring-

- 0-** Nickel – 3" 3-1/2"
Brass 3"
- 2-** Nickel – 2-1/2"
Brass – 2-1/2"
- 4-** Nickel – 1-1/4", 1-1/2", 1-3/4", 2"
Brass – 1-1/4", 1-1/2", 1-3/4", 2"
- 7-** Nickel – 1/2", 5/8", 3/4", 1"
Brass – 1/2", 5/8", 3/4", 1"



3250-
Nickel 3/4" 1", 1-1/4", 1-1/2", 1-3/4", 2"
Brass 3/4" 1", 1-1/4", 1-1/2", 1-3/4", 2"



Snaps



200 Spring Snap- Loop eye, flat spring, nickel plated.
5/8", 3/4", 1", 1-1/4"
1-1/2", 2"
Length- 2-7/8" through 4"



340 Spring Snap- Loop eye, flat spring.
Nickel 1/2", 5/8", 3/4", 1"
Brass 1/2", 5/8", 3/4", 1"
Length- 1-5/8" through 1-3/4"



204 TRIGGER SNAP- Hubbard.
Nickel.
Eye 7/8"
Size 3/4"
Length 1-3/4"



5013 Trigger Snap-
Round Eye Nickel – 1/2", 5/8", 3/4", 1"
Round Eye Brass – 1/2", 5/8", 3/4", 1"
Square Eye Nickel – 5/8", 3/4", 1"
Square Eye Brass – 5/8", 3/4", 1"



225 Swivel Eye Bolt Snap- Round swivel eye, nickel or brass.
Eye Size- 1/2", 5/8", 3/4", 1"
Length Size- 3-1/4", 4", 4-1/16",
3-3/4", 4-1/4"



Double End Bolt Snap- Nickel
161- light 3-1/4"
162- medium 4-1/16"
163- heavy 4-5/8"



Open Eye Bolt Snap- Cadmium
230- 3-1/4" Nickel
232- 4" Nickel
240- 4-1/2"



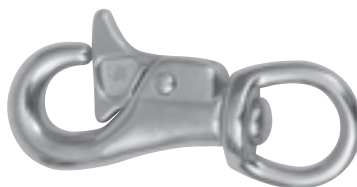
56 Snap-
Nickel – 5/8", 3/4", 1"
Brass – 5/8", 3/4", 1"



Winch Snap-
Formed steel rod.
2", 2-3/8", 2-5/8", 3-1/4",
3-1/2", 3-3/4", 4-1/2",
5-1/2" & 6-1/4"



3142 Bull Snap-
Swivel eye.
Nickel – 3/4" x 3-7/8"
Brass – 3/4" x 3-7/8"



31431 Stainless Steel Snap with trigger-
1" x 4"
31432 Nickel Snap with trigger-
1" x 4"



1016 Panic Snap Nickel-



424 Spring Snap-
2-1/4" flat spring bit snap. Nickel plated.



422 Spring Snap-
1-3/4" flat spring bit snap. Nickel

Hardware



Leather Conchos

With slots- 1-1/4" 1-1/2" 1-3/4" 2"

No slots- 1-1/4" 1-1/2" 1-3/4" 2"



Rope Clamp-

582 Nickel 582 Brass



364 Al Forjas hook- set of 4



Screw Eye-

10151- 3"



371220- Spur Key Chain



Snaffle Bit Key Chain-



117- Tackaberry Buckle Zinc Plated



1954 Clip and dee

Long- 1/2", 5/8", 3/4"

Short- 5/8", 3/4"

Solid Brass- 5/8", 3/4", 1"

1958 Clip and dee

Stainless Steel - 1"



101520- Steel Cross Tie



125500- Quick Release Honda



371190- Dee Bit Key Chain



142- Nickel Plated Snap 1", 1-1/2"



4950 Loops- Nickel plated

1/2", 5/8", 3/4", 1",

1-1/4", 1-1/2", 1-3/4", 2"



7350 Quick Link- Zinc plated

1-5/8", 1-9/16", 2-1/4", 2-5/8"

2-7/8", 3-3/16", 3-1/2", 3-7/8"



Screw Eye and Ring-

101510- 3" x 2"



244410- Plastic Honda



371200- Tom Thumb Key Chain

Dyes



FIEBING LEATHER DYE

Alcohol based dye dries uniformly and mixes to create interesting middle tones. See color chart below.
Packaged in 4 ounce, 32 ounce & gallon.

PROFESSIONAL OIL DYE

An improved version of their traditional dye.
Also an alcohol based dye created specifically for natural strap tooling leather.
Excellent penetration and color fastness.

LEATHER DYE REDUCER

Thins dye for tint adjustment.
Packaged in 4 ounce, 32 ounce & gallon.

FIEBING'S LEATHER DYE

RED	OXBLOOD	DARK RED	BURGUNDY	MAROON	MAHOGANY
MOCCASIN BROWN	DARK BROWN	CORDOVAN	CHOCOLATE	MEDIUM BROWN	RUSSET
LIGHT BROWN	BEIGE	TAN	BRITISH TAN	BUCKSKIN	ORANGE
LIGHT TAN	YELLOW	KELLY GREEN	GREEN	AQUA GREEN	TURQUOISE
LIGHT BLUE	NAVY BLUE	PURPLE	BLACK		

FIEBING'S PROFESSIONAL OIL DYE

RED	MAHOGANY	CHOCOLATE	DARK BROWN	WALNUT	LIGHT BROWN
SADDLE TAN	SPANISH BROWN	GOLDEN BROWN	SHOW BROWN	DARK CHOCOLATE	YELLOW
GREEN	ROYAL BLUE	BLACK			



MEDIUM WOOL DAUBER

For stain and dye application, 1"

3445-10 10 pack
3445-99 100 pack



JUMBO WOOL DAUBER

For stain and dye application, 1 1/2"

43081-000 10 pack
43081-002 100 pack

Dyes

LEATHER REFINISH An aid to color restoration. Easy to use Leather Refinish is a non-penetrating dye that is flexible & will not rub off on clothing. Does not require any top finish after application, just allow to dry. Works great on leather coats, hand bags or upholstery. Packaged in 4 oz bottles. Leather preparer 2 oz.



Stains & Top Finishes



ANTIQUE FINISH—Imparts a soft, lustrous patina that emphasizes tooling, carving and embossing with a subtle, two-toned effect. Antique Finish is not entirely waterproof and should be protected with an additional wax or resin coating such as Resolene, Leather Sheen, Tan Kote or Leather Balm with Atom Wax. Antique Finish can also be thinned down with Tan Kote. Packaged in 4 oz or 32 oz.

COLOR CHARTS

FIEBING'S ANTIQUE LEATHER FINISH



MAHOGANY



CORDOVAN



SHERIDAN BROWN



NEUTRAL



BRITISH TAN



TAN



LIGHT BROWN



MEDIUM BROWN



DARK BROWN



BLACK



RESOLENE

A flexible, durable, water resistant acrylic top finish for dyed, antiqued or polished leathers. Produces a medium to high gloss finish. Packaged in 4 oz, 32 oz & gallons.



TAN KOTE

A resin based formula used by belt and saddle makers for an easy to use top finish. Packaged in 4 oz, 32 oz & gallons



SADDLE-LAC

A clear, quick drying lacquer finish that protects saddlery against the drying out and soiling effects of constant exposure to the elements. Saddle Lac dries glossy, smooth and hard yet it flexes. Packaged in 13 oz aerosol cans.



LEATHER SHEEN AEROSOL

Instantly shine all smooth leather articles with this flexible wax finish. Great for use on saddles, belts, shoes and handbags. Packaged in 11 oz aerosol cans.

Edge & Top Finishes



CLEAR LAC

A high gloss clear protective coating for all smooth and exotic leathers. Quick drying. If less gloss is desired mix with equal parts thinner. 32 oz containers.



LEATHER BALM WITH ATOM WAX

A liquid wax finish for smooth leathers. Can be buffed to a rich shine. Not a water resistant top finish. Packaged in 4 oz or 32 oz.



EDGE KOTE

Recommended for use on natural edges. Dries water resistant with a flexible, deep semi gloss finish. Edge Kote can be thinned with water. Manufactured in black, tan, brown, light brown, dark brown & mahogany. 4 oz or 32 oz.



EDGE DYE FINISH & APPLICATOR

Provides a quick and easy professional finish on the edges of belts, saddles and other leather goods. Dries in minutes, water resistant. Easy to use roll-on applicator makes this a must for all leather crafters. Black or Brown 4 oz bottles.



BAG KOTE

This top finish will give a soft satin finish. Preferred by saddle makers. Packaged in 4 oz or 32 oz.



DURA EDGE

A flexible, durable finish that will result in a professional edge every time. No need for burnishing, buffing to get the edge you always desired. Dries bright, hard and will not rub off. The convenient wool dauber attached to the cap allows for easy application with minimal mess. Available in black or brown. 8 oz bottles.



ECO FLO CARNAUBA CREME

A water based, blended wax conditioner and finish for natural or dyed, new or aged smooth leather. Provides a durable wax finish that resists water and dirt while conditioning the leather. Buffs to a nice luster. 4 fl. oz.



ECO FLO GUM TRAGACANTH

A water based natural gum based edge slicking and burnishing compound for use on veg-tanned leather. Produces a smooth shiny burnished edge. Packaged in 4 oz or 32 oz

Cleaners & Conditioners

FIEBING SADDLE SOAP

Use on all fine smooth leather goods. Cleans leather while maintaining suppleness and strength. Formulated in Yellow (contains tallow) or White, packaged in 3.5 oz, 12 oz & 5 lb cans.



FIEBING'S LIQUID GLYCERINE SADDLE SOAP

More convenient to use than bars. Just spray on and wipe off this ready to use mixture and see the results. Cleans and preserves smooth leather. Buffs to a rich, satin finish. 16 oz.

GLYCERINE SADDLE SOAP BAR

The 100% glycerine bar restores leather to its full-bodied suppleness and buffs to a rich, satin finish. Used by rawhide braiders for lubricating strands.



LEXOL LEATHER CARE PRODUCTS

Lexol the most trusted name in leather care. Used for automotive interiors, home furnishings, saddlery, jackets & shoes.

Lexol-pH Leather Cleaner deep cleans leather, removing dirt without the damaging effects of alkaline soaps.

Lexol Leather Conditioner extends the life of fine leather goods, protecting them from cracking and drying by restoring the very oils used in the tanning process.

Lexol NF Neatsfoot Leather Dressing is formulated to condition and protect light colored leather without darkening like traditional neatsfoot products. Packaged : 8 oz, 500 ML (16.9 oz) 1 Liter (33.8 oz) & 3 Liter (101.4 oz).



Cleaners & Conditioners



FIEBING NEATSFOOT OILS

100 % PURE NEATSFOOT OIL A natural preservative for leather subjected to rugged use and outdoor exposure. The primary function of neatsfoot oils is to replace the evaporated oils in leather, replacing them with natural animal oils is best.

PRIME NEATSFOOT COMPOUND This combination of natural and synthetic oils is used by saddle makers and boot makers to soften, preserve and waterproof smooth leathers. Packaged in 8 oz, 16 oz, 32 oz & gallons.



MONTANA PITCH BLEND

All natural leather dressing made from Pine Pitch, Mink Oil, & Beeswax. Naturally inhibits mold, fungus & mildew. Contains NO petroleum or silicone. 4 oz.

BLACKROCK LEATHER 'N' RICH

Cleans, nourishes, beautifies all smooth leathers. Made with carnauba wax. Buffs to a high shine. 4 oz.



SKIDMORES LEATHER CREAM

An all purpose leather cleaner conditioner. Particularly effective in restoring dry neglected leather. 6 oz or pint containers.



ANGELUS MINK OIL

Ideal for leather & vinyl. Helps condition, waterproof and prevent salt stains. Will darken lighter colored leather. Paste packaged in 3 oz & 8 oz, Oil packaged in 8 oz.

LINCOLN EZ CLEANER

An all-purpose non-solvent cleaner for suede, leather & fabric. Use it like a shampoo, build up lather with damp sponge to easily remove dirt or grease stains. Packaged in 8 oz or gallons.



Adhesives



PLASTIC CEMENT POT

This sturdy plastic container holds a pint of cement. Metal stem slides up and down to keep brush even with cement. Replacement brushes available.



BARGE ALL PURPOSE CEMENT

The original formula bonds leather, rubber, wood, steel, glass. Now also available in toluene free formula. Packaged in quarts or gallons & 3/4 oz & 2 oz tubes in the TF formula.



BARGE UNIVERSAL THINNER

Use with any All-purpose neoprene and urethane adhesive, and all barge products. Packaged in quarts & gallons.

MASTER QUICK DRYING ALL PURPOSE CEMENT

Used by the shoe repair & leather industry since the 1950's, it remains the most popular and requested all purpose contact cement in the U.S. Available in quarts, gallons and the handyman's favorite 4 oz can.



BARGE RUBBER CEMENT

Temporary bonding agent for rubber, leather & fiber. Packaged in quarts & gallons.



ATCO CEMENT KEEPER

This cast zinc dispenser's top and cone are coated with a non-stick finish that allows dried adhesive to be simply peeled off. The low profile design and weighted bottom make the dispenser stable for use. Holds about 1/5 gallon. The horsehair brush is replaceable.

AQUALIM 315 GLUE

Without solvents - Water Based
For leather, furs, textiles, felt, foam, EVA, PU, cork, rubber, wood. The dried glue is flexible and transparent.



Available in
8 oz
Pint
Gallon

Conchos

NOTE: ALL CONCHO'S ARE SCREWBACK UNLESS SLOTTED



PRAYING COWBOY

Old silver
LL-1904-OS 1 1/4"



OLD SILVER W/GOLD BERRY

LL-862-SX/21 1"
LL-861-SX/21 1 1/4"
LL-860-SX/21 1 1/2"



COPPER ROPE EDGE

LL-1785-30 1"
LL-1786-30 1 1/4"
LL-1787-30 1 1/2"

ALSO AVAILABLE
IN OLD SILVER/GOLD
ROPE & ANTIQUE SILVER



COPPER CROSS BERRY

LL-1736-30 1"
LL-1737-30 1 1/4"
LL-1738-30 1 1/2"



TWO TONE BARBWIRE

55 1"
55 1 1/2"
Also available in Slotted:
56 1" – 3/8" slot
56 1-1/2" – 1/2" slot



TWO TONE LONGHORN/BARBWIRE

54 1"
54 1 1/2"



COPPER BERRY

LL-862-30 1"
LL-861-30 1 1/4"
LL-860-30 1 1/2"
LL-1770-30 1" SLOTTED
LL-1768-30 1 1/2" SLOTTED



ANTIQU SILVER BERRY SLOTTED

LL-1770-OS 1"
LL-1769-OS 1 1/2"

ANTIQUESILVER W/GOLD BERRY SLOTTED

LL-1770-SX/21 1"
LL-1769-SX/21 1 1/2"



ANTIQU SILVER BERRY

LL-862-OS 1"
LL-861-OS 1 1/4"
LL-860-OS 1 1/2"



COPPER STAR
LL-1009-30 1 1/4"



MORGAN DOLLAR
Antique silver plate.
7097-06 Head 1 1/2"
7097-07 Eagle 1 1/2"



HALF DOLLAR
Antique silver plate.
11372-03 Walking Liberty 1 3/16"
11372-04 Liberty Eagle 1 3/16"



ROPED BERRY
Available in two finishes.
Shiny silver plate or antiqued silver plate.
Shiny Antique
7428-01 - 3/4" 7428-10 - 3/4"
7428-02 - 1" 7428-11 - 1"
7428-03 - 1 1/4" 7428-12 - 1 1/4"
7428-04 - 1 1/2" 7428-13 - 1 1/2"



SILVER ROPE EDGE
Shiny silver plate over solid brass.
1344-04 3/4"
1344-05 1"
1344-06 1 1/4"
1344-07 1 1/2"



HIGH SIERRA
Polished silver plate.
7940-02 3/4"
7941-02 1"
7943-02 1 1/2"
7945-02 1" Heart

DIABLO
Antique silver plate
with carved appearance.
7414-01 1/2"
7414-02 3/4"
7414-03 1"
7414-04 1 1/4"



RUNNING HORSE
Polished silver plate.
1-3/16" x 1"
7420-00 Right
7420-01 Left



HORSE HEAD
Polished silver plate.
1 1/8" x 1"
7421-01 Right
7421-02 Left

Conchos



LONGHORN
OVAL 1 3/4 X 1"
11373-25



PICTISH KNOT
11373-29 1"



ETERNAL CROSS
11373-30 1"



KELL DRAGON
11373-31 1"



LINDES FARNE SPIRAL
11373-32 1"



ROPE EDGE CROSS
ANTIQUE SILVER
7791-05 1"



ROPE EDGE RIBBON
ANTIQUE SILVER
7792-05 1"



CONCHO SLIDE ADAPTOR
Just add your favorite concho.
11381-01 5/8"
11382-01 3/4"



CONCHO SNAP ADAPTER
Use any of our screwback concho's
as a snap cap to dress up any item.
11383-00 10-pack



ADAPTER SCREWS
Attach conchos to saddles etc.
1346-00 10 pack



#66 SILVER ROPE EDGE
1 1/2" SLOTTED



STAR SLOTTED NICKEL
1320-01 1"
1320-02 1 1/4"
1320-03 1 1/2"



STAINLESS STEEL SMOOTH
1350-02 1 1/4"
1350-03 1 1/2" POLISHED
BRASS SMOOTH
1350-05 1 1/4"
1350-06 1 1/2"

Buckles/Sets



HATBAND SET
Silver & gold plate.
7305-10 3/8"



HATBAND SET
Silver & gold plate.
7304-10 3/8"



HATBAND SET
Silver plate.
1696-02 3/8"



HATBAND SET
Antique nickel plate.
1695-00 3/8"



CALGARY SET
Nickel plate.
Fits 1 1/2" belts.
11678-00



ISABELLA SET
Polished silver plate
Fits 1" belts.
7854-05



SMOOTH SET
Silver plate.
Fits 1" belts.
7224-02



VICTORIA SET
Antique silver plate over
solid brass. Fits 1 1/2" belts.
1881-00



FLORAL SET
Silver plate.
Fits 1 1/2" Belts.
1881-02



DIABLO SETS
Antique silver carved
floral design.
7601-00 fits 3/8" belts
7601-01 fits 3/4" belts
7601-02 fits 1" belts
7601-03 fits 1 1/2" belts



CENTER BAR BUCKLE
1720-00 1" BRASS
1721-01 1 1/4" BRASS
1722-01 1 1/2" BRASS
1723-01 1 3/4" BRASS
1721-02 1 1/4" NICKEL
1722-02 1 1/2" NICKEL
1723-02 1 3/4" NICKEL

Braiding/Horse Hair/Books

BEGINNER BRAIDING KITS



BRACELET KIT

Contains:

- 1) Four 3/32" x 48" leather strings.
- 2) Three 3/32 x 12" leather strings.
- 3) "Leather Braiding" book by Bruce Grant.
- 4) Wood practice dowel.



HATBAND KIT

Contains:

- 1) Four 3/32" x 82" leather strings.
- 2) Two 3/32 x 12" leather strings.
- 3) "Leather Braiding" book by Bruce Grant.
- 4) Wood practice dowel.



RAWHIDE SCARF SLIDE KIT

Contains:

- 1) Rawhide string 1/8" x 54"
- 2) Leather collar.
- 3) "Leather Braiding" book by Bruce Grant.
- 4) Wood practice dowel.



HORSE HAIR

Black, White or Brown.
Sold in 1 lb. or 1 oz hanks.



HITCHED HORSEHAIR

The complete guide for self learning. Learn: the basic steps of hitching, the 6 row diamond which patterns are based on, traditional knots for covering joints, tips. Also learn to create intricate patterns, using graph paper, dye your own horsehair, finish your projects with a professional touch, make a press, size belts and use patterns for custom orders. Also includes graphed patterns with complete directions. Each pattern is carefully selected to teach you to develop your own designs.

HITCHED HORSEHAIR II

Advanced patterns and inlay projects. A new distinct hitching technique is exclusively revealed. Most importantly, Hitched Horsehair II is an indispensable guide that teaches you to break the rules and empower your creativity.
By Shoni Maulding.



Braiding/Books



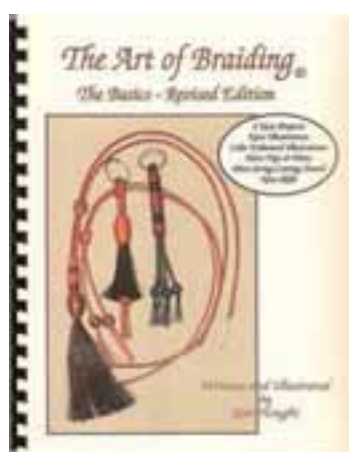
LEATHER BRAIDING

by Bruce Grant. The definitive book of its field. This clearly written guide to the art of leather braiding contains illustrations, step by step instructions, and a wealth of incidental, fascinating information. The book makes accessible to even the novice serviceable and recreational uses of leather.



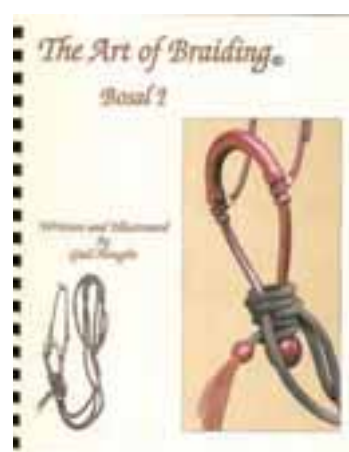
BRAIDING RAWHIDE HORSE TACK

By Robert L. Woolery. Here is an instruction manual for the novice worker in rawhide. This book assumes no previous knowledge or experience. Provides simplified techniques for producing a number of basic patterns. Woolery is the founder of the Rawhide & Leather Braiders Association.



THE ART OF BRAIDING

Revised Edition - Written and illustrated by Gail Hought. Gail is primarily known for her artistic leather braiding skills. The western world recognized her exceptional talents when the first of several articles appeared in *WESTERN HORSEMAN* magazine featuring examples of her braided tack. This easy to learn and well illustrated book is the foundation for the beginning braider.



THE ART OF BRAIDING BOSAL I

By Gail Hought. This book is designed to provide detailed comprehensive information and complete instruction for braiding a basic working bosal. Great illustrations make this difficult project as simple as possible. Instructions are for an average length bosal that is 5/8" in diameter.

THE ART OF BRAIDING

Romal Reins I

By Gail Hought.

Focusing on braiding romal reins in 4 styles, each with different levels of difficulty. There is a wealth of information concerning the preparation of rawhide strings. Many advanced skills are in this book.



Romal Reins II

By Gail Hought.

Romal Reins II is the second more advanced book in the romal braiding series.



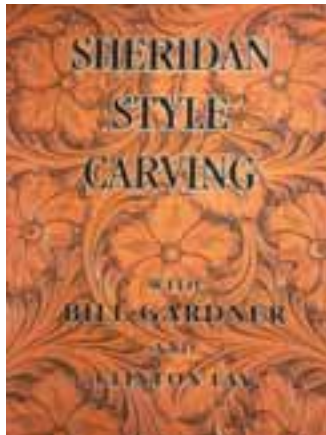
THE ART OF BRAIDING

Bosal II by Gail Hought.

This book offers instruction for plaiting a 16 plait core, braiding an 8 bight nose button, 8 bight heel knot and adding 2 contrasting colors to the nose button and heel knot.

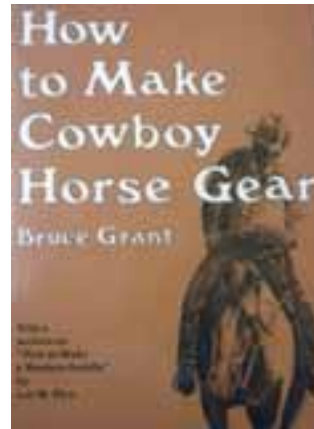


Books/Patterns



SHERIDAN STYLE CARVING

By Bill Gardner & Clinton Fay. If you are looking to "get a handle" on what the "Sheridan Style" is basically about, this book is the perfect tool. The spirit of the West is still alive and well in the beautifully sculptured floral carvings of the "Sheridan Style".



HOW TO MAKE COWBOY HORSE GEAR

By Bruce Grant Written by a man who made a life-long study of leather craft and rawhide work. Your answers to how to do it questions in making horse riding gear.

HAND SEWING

Al Stohlman shows you timeless stitching techniques with valuable information on tools and material needed to get started. Our favorite!

61944-00



PATTERNS

By Chan Geer
Checkbook
Roper Wallet
Billfold
Hipster Wallet
Trifold Wallet
Belts
Coaster-Buckle
Cover.



PATTERNS

By Chan Geer
Checkbook-Wallets.



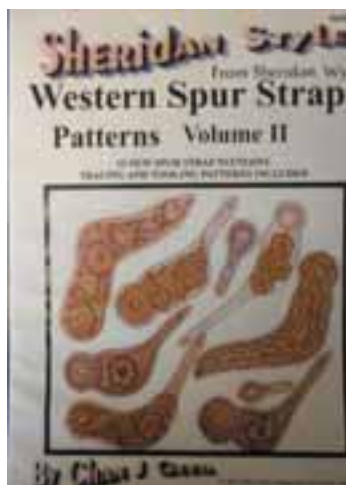
PATTERNS

By Chan Geer.
Corner patterns,
12 designs
25 pages
51 tracing patterns.

Patterns



PATTERNS
By Chan Geer.
10 New
Center Designs.



PATTERNS
By Chan Geer.
Western Spur Strap,
Volume II.

PATTERNS
By Chan Geer.
The Cross,
11 images of this
symbol of faith.



PATTERNS
By Chan Geer.
Chap trim,
waist bands,
side & concho.



PATTERNS By Chan Geer.
Drawing flowers, leaves,
scrolls & swirls.



PATTERNS By Chan Geer.
Checkbook/Roper.



PATTERNS By Chan Geer.
16 new checkbook patterns.

Patterns

PATTERNS

By Chan Geer.
Sheridan Style
Variety Pack.



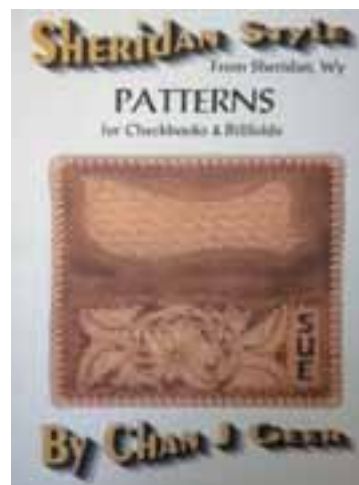
PATTERNS

By Chan Geer.
Five Mantel Clock
Patterns.



PATTERNS

By Chan Geer.
Belts 3/4" to 2".



PATTERNS

By Chan Geer.
Checkbooks
& Billfolds.

PATTERNS

By Chan Geer.
Learn Sheridan
Style Tooling.



PATTERNS

By Chan Geer.
15 New
Spur Strap Patterns.





**CHAP
PATTERNS PACK**
Make your own pair
of chaps for ranch,
rodeo or biking.
Patterns include
batwing, shotgun
and chinks.
6023-00



**SADDLEBAG
PATTERN PACK**
Full size patterns
and detailed
instructions for
two great styles
of saddlebags
and horn bags.
6030-00

**HORSE TACK
ACCESSORY
PATTERN PACK**
Full size patterns with
instructions on breast
collars, halters, bridles,
head stalls, hobbles,
thermos case, bucking
rolls, tapaderos, spur
straps and martingales.
6025-00



**RIFLE CASE
PATTERN PACK**
Three distinctly
different case
patterns for
you to create
and customize.
6028-00



**ADULT PLAINS
BOOT MOCCASIN
PATTERN PACK**
Authentically styled
knee-high boots
Men's sizes
5 to 12.
6035-00

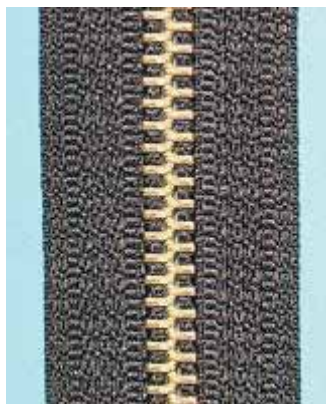


**PLAINSMAN
BOOT PATTERN**
Full-sized patterns
and instructions for
comfortable, rugged,
knee-high lace-up boots.
For men's sizes 5 to 13
and women's sizes
6 to 14.
62690-00



**MOCCASIN
PATTERN PAK**
This pack features
full-size cutting patterns
and instructions for two
styles. Makes Fringed
Boot in women's 5 to 12.
Makes Scout Moc in
women's sizes 4 to 11.
Men make on size larger.
62668-00

Velcro/Zippers



#5 MEDIUM WEIGHT CLOSED END

For purses & bags. 9/16" tape available in brown or black, sizes 6" to 20" brass teeth.

#5 MEDIUM WEIGHT OPEN END

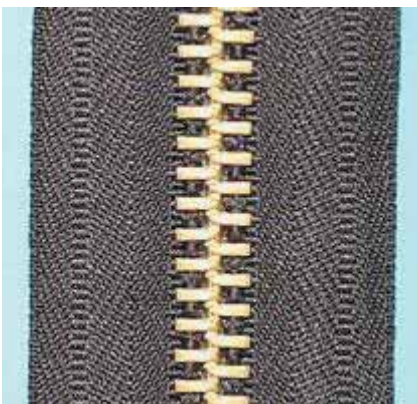
For jackets. 9/16" tape available in brown or black, sizes 10" to 36" brass teeth.

#5 TWO WAY

9/16" tape available in brown or black 27" 30" & 36".

#5 ZIPPER PARTS

#5 Tape brown or black
#5 Sliders
#5 Top Stops
#5 Bottom Stops



#10 HEAVY WEIGHT OPEN END

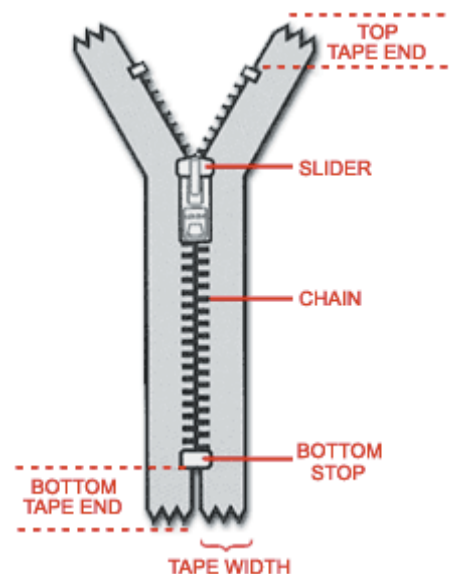
For chaps, sleeping bags, upholstery & bags. 3/4" tape available in brown or black, sizes 20" to 38" plus sizes 48", 72" & 110".

#10 TWO WAY

3/4" tape available in brown or black 26", 30", 36" & 48".

#10 ZIPPER PARTS

#10 Tape brown or black
#10 Sliders
#10 Top Stops
#10 Bottom Stops



HOOK & LOOP

Sew in type. Stocked in white, black & beige. 1", 1-1/2" & 2"
Hook & loop sold separately.

LEATHER TOOL SHARPENING



ROUND KNIFE

- 1) The round knife should be pushed not rolled in cutting leather.
- 2) If the knife is thick, it should be thinned.
- 3) The width of the bevel of the cutting edge should not be less than three times the thickest of leather cut with that blade
- 4) To hand sharpen the blade hold on a table or a corner of it and use a bench stone (rough side). Start from the middle and work toward the point each way. Then reverse side and do likewise on the other side.
- 5) Then do likewise with the fine side of the bench stone.
- 6) The fine stropping should be done on a piece of leather the same direction as on the stone. If stropped each time the knife is used, less sharpening with a stone is required. See Strop page 39.
- 7) Another option to strop the knife is to use a cardboard wheel mounted on an electric motor or drill.
- 8) If knife is sharp, it should skive a piece of heavy leather 12-14 oz in one stroke.



EDGERS

- 1) In sharpening edgers, check whether the relief of tool is on bottom or top. The check whether flat or elliptical in shape. If elliptical, use a string with valve grinding compound on it. Draw the string toward the cutting edge. Do not make a large wire edge - just enough to feel.
- 2) The next step to remove the wire edge is use a toothbrush or piece of leather with polishing compound or cardboard wheel.
- 3) Another way if available is to have a leather wheel on an emory stand with the shape of the smallest land and groove of the smallest edger or use a 45 degree angle cardboard wheel.
- 4) On the bissonnette type of edgers use the same procedure but be careful not to elongate the hole as it will change drastically the size.
- 5) To sharpen the radius type edgers use a fixture with a wire between 2 uprights and 240 grit emory cloth folded over the wire.
- 6) On the flat (bevel) type edgers use a small flat stone (less in width than the flat) to sharpen, then take the wire edge off as previously discussed or use a small piece of wood to hold the 240 grit emory paper to sharpen. Use a tongue depressor cut to the proper width to hold the emory paper or use a 45 degree cardboard wheel to deburr.
- 7) The French edgers are sharpened the same way as the flat bevel type edgers. Do not make a larger wire edge to deburr as it may dull the tool when it breaks off. The wire edge will break off with the opposite movement (back and forth).

LEATHER TOOL SHARPENING



TUBE OR LEVER PUNCH

- 1) First thing to check on a punch tube that indicates it is dull is to check the anvil.
- 2) If the anvil is deeply or chewed up from an excessive amount of punching, take a small mill bastard file and file out the marks, or replace with new anvil. Be sure the tube edge fits on the flat anvil. Check with a piece of paper, if it doesn't mark a complete circle, file the anvil until a complete mark on the paper shows up.
- 3) To sharpen punch tubes remove from handle/wheel.
- 4) Put the tube in an electric drill chuck. Then rotate the drill chuck and stand a bench stone 90 degrees vertical and just touch the cutting edge until it is true. Then remove the wire edge that formed on the inside with a needle file. Polish the outside after grinding down the tube on the same angle. Again clean out inside wire edge. Polish outside on leather strop or a cardboard wheel.



OBLONG DRIVE PUNCH

- 1) To sharpen the punch use the two grit bench stone sharpening toward the cutting edge maintaining the same outside angle.
- 2) Always use a vise to hold the punch when sharpening.
- 3) It also may be hand held and sharpened on a belt sander with the cutting edge pointed the way the belt travels.
- 4) Then remove the inside wire edge and polish on the outside with leather or cardboard wheel.



STRAP END PUNCH

- 1) Sharpen with a bench stone both grits on the outside only.
- 2) Remove the wire edge on the inside with a piece of 120 emery cloth wrapped around a wood dowel or a flat piece of wood.
- 3) Polish with a piece of leather or a cardboard wheel.